

Manulife *Forest Times*

Brought to you by Manulife Investment Management Forest Management (NZ) Limited

Issue No.13 | July 2023



Welcome To Our Second Newsletter For 2023

By Chris Barnes - General Manager

I want to start by thanking staff and contractors for their understanding and support as we have reduced production during June in response to weak markets conditions.

It was very important we reduced supply given the imbalance in the markets, combined with what appears to be a structural shift or maturing of the Chinese log market. It has been a long time since MFM (NZ) reduced production by 20% across all clients and we are very conscious of the impact this has. We are working hard to return to normal production levels as soon as possible. We are fortunate that we have excellent supply channels, strong customer relationships and market presence through AVA, and arguably the best market diversification of New Zealand forest growers. These factors, combined with an efficient supply chain and supported by our scale of operations, put us in a very good position to get back to normal production.

We had a contractor call at the end of June and again in late July to discuss markets and the current state of play and we will continue to keep you updated. Always feel free to reach out to me on the number below if you would like to discuss.

Since our last edition we have had Max Lloyd-Jones, Paul Hood and Tawera Nikau visit staff and contractors to discuss safety and safety engagement. Thanks to Glen and Andrew for the coordination of this work and a special thanks to everyone that took the time to answer Max, Paul and Tawera's questions and give us valuable



feedback on what we can do better as a business and leaders. The next step in this process is to share the results from the reports with you all. Every three years we do this review and it has been great to reflect on the improvements since the first report in 2016. As always, there are things we can and need to do better. Watch out for an invite for an update on the findings.

Onto staff matters and we have had four recent departures with Aaron Calvert, Tony Dwane, Hamish Owen and Sarah Jane Luoni finishing since the last edition. Aaron, Tony, Hamish and SJ made outstanding contributions during their time with MFM (NZ) and we wish them all the very best in their new careers – you will all be missed.

...Continue on following page.

What's Inside

National Managers' Update

National Managers' Update ...Pg2-4

Community

Kaihu Valley Trail (Stage 1) ...Pg5

Competition

Winner Of Best Article In April 2022 Newsletter ...Pg5

Export

China Visit ...Pg6-7

Harvesting

Mechanisation Journey ...Pg8

Getting it Done Together ...Pg10

Forestry

Ngāti Kea Ngāti Tuara Field Trip – Kinleith Forest ...Pg11

People

Lions Club of Tokoroa ...Pg12

Ngā Pou a Tāne Summit ...Pg12

Health and Safety

National Recognition of Health and Safety Innovation ...Pg13

Environmental

Waiotahi Blessing ...Pg14

Hydrogen Fuel, Is It Our Future? ...Pg15

Financial Wellbeing

Cost of Living – Tips to Save Money ...Pg16-17

Looking After Your Financial Wellbeing ...Pg18

New Staff

Introducing Our New Staff ...Pg18-21

Safe Travels in Canada
Sarah Jane ...Pg21

A highlight of every edition of Manulife Forest Times is the introduction of new staff and we are very fortunate to have seven new staff in this edition. I would like to make welcome Alexander Thompson (TJ), Lana McNaul, Lani Dawson, Shane Learmond, Jarron McInnes, Karl Boobyer and Nathan Morshead. Please take the time to introduce yourself and say 'hello' when you get the opportunity. Every six months or so all new staff come together to meet and get to know each other, learn more about the business and share a meal. The front page photo is from our May get together where we also visited the Port of Tauranga to inspect a vessel loading.

Finally, I would like to thank our distribution team for the great safety focus on seatbelts over the past few months. We have seen

some great improvements across cartage contractors and excellent uptake across the wider industry that no doubt will save lives. Thank you to the support our contractors have given to this initiative and a reminder to everyone reading this – wearing a seatbelt in mobile machinery is a MFM (NZ) lifesaving rule

Thank you to everyone that contributed articles and for the work that goes into publishing this edition (thanks Helen!). Hopefully by the third edition both the weather and markets will have improved. Please stay safe and feel free to give me a call (027 257 7260) if I can help or you would just like to have a chat.

National Managers' Update



Andrew Widdowson National Operations Manager

Friday 30 June marked the end of another financial year (FY23) for Taumata Plantations Ltd and Tiaki Plantations Company Ltd. To quote a well-used rugby phrase, what a game of two halves the year has been in terms of weather and log markets!

It appears we are now moving into drier weather for the remainder of 2023 as the wet, humid La Niña weather system is displaced with El Niño. The severe weather events and record rain levels we have experienced since January have certainly tested the resilience of our forestry supply chains.

From an operational perspective, FY23 has been another strong year, with our silviculture operations thinning to waste a total of 5,234 hectares. This is a new record for our business and is indicative of a high level of commitment from our forestry contractors and MFM (NZ) foresters. We are at the mid-point of our 2023 re-establishment programme which amounts to a total of just over 4,000 hectares. Our Kinleith and King Country forests account for 75% of the programme (3,000 hectares) which is a large undertaking involving upwards of 40 planters on any given day. Without these planters we would not have a future forestry plantation business.

Our planning and engineering team has experienced its share of challenges over the last 12 months with severe weather events disrupting construction of forward harvesting infrastructure. At the same time we have increased our maintenance programme, both in our forests and our two log yards (Kinleith and Kawerau). Notwithstanding, we closed FY23 in a very good forward position of 8.8 million tonnes forward planned and 3.6 million tonnes harvest ready.

Our harvesting operations have done a great job in recovering from the lost production over the first quarter of 2023 as a result of Cyclone Gabrielle. Both Taumata and Tiaki closed the year within 1% of their harvesting budget. The Wainui windthrow recovery programme is scheduled to be completed early spring with five crews, (50% of OTPP's current harvest capacity), doing a great job under difficult conditions.

It's important to also acknowledge the dedication and flexibility from our distribution operations over FY23 who collectively have delivered 4.3 million tonnes (143,000 loads) over the last 12 months in at times trying circumstances.

As you will be aware, the China export log market has become significantly oversupplied with imported softwood logs which has resulted in a sharp decrease in both log demand and CFR log

prices. New Zealand supplies 60% of China's imported softwood logs and as such the impact of this downturn is significant. Clearly the market will recover. However, for now the sensible response is to reduce log supply from New Zealand into the China market. Thank you to all our harvesting and distribution contractors for their understanding of the situation and their cooperation as we work to remove volume from the export supply chain.

Ngā mihi



Geoff Gover

National Harvest Planning & Engineering Manager

The monsoon season/year continues with record rainfall in most parts of New Zealand. The impact of the continual rainfall has had a significant impact on the roading infrastructure.

Firstly, the maintenance demand has been unrelenting and the engineering crews are now tired and exhausted trying to keep up. There have been days when we haven't had enough resources and I thank those that have had to wait, for their patience. The folks that slog away every day ensuring we get product to market deserve accolades for their unrelenting dedication to the task.

The second issue we face with the wet is the soils have been saturated for much of the year stopping all earthworks. The forward position (amount of wood we have ahead of the harvest crews) has shortened as we haven't been able to build roads and landings. We still have a reasonable ahead position but it's not where we would normally be at this time of the year.

The focus for the coming months for the planning and engineering team is safety and near miss reporting. We have to work out how we get better at reporting so we can all learn from one another's mistakes and avoid any repetition and opportunity for someone to be hurt. I have met with a number of suppliers and staff to gauge why reporting has fallen off since Covid.

The Manulife goal is "that everyone goes home safe every day". Let's work together and communicate well so we all go home at the end of a hard day's work. Please look out for your mates.

Lastly, thanks to the engineering and planning team for the support they gave Nathan Baird while I spent a couple of months away in Europe. It's a team effort that gets the results.

Kia noho haumaru (Let's be safe)



Mike Baker

National Forestry Manager

Firstly, I would like to thank our thinning contractors and teams for achieving the budgeted thin to waste programmes for each of the Taumata Plantations Limited regions over the last 12 months. 4,500 hectares of thinning was completed, with

crews moving, at times, between regions to help ensure the annual programmes were met. With the wet weather experienced over the last 12 months, this is a great achievement.

Planting season is now over halfway and going well. Both Central and Northern regions are on track to finish as scheduled, while Eastern/OTPP plan to start their relatively small programme in August.

At this time of year, our annual trial measurement programme is also being completed. There are approximately 100 current trials in the MFM (NZ) estate that look at testing and improving the way we grow our forests. These trials range from genetic improvement through to thinning, nutrition and forest health. Some of our red needle cast trials were also included as part of Scion's Resilient Forests Conference field trip held in Kinleith forest in June.

With regards to the MFM (NZ) forestry team, Jarron McInnes has joined MFM (NZ) as a Protection Forester based in Rotorua. Jarron brings a strong background in fire as well as previous experience in both silviculture and harvesting. As part of his role, we look

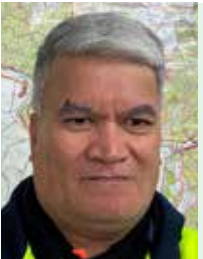
forward to utilising Jarron's experience and skills in building up fire-fighting capability amongst our contractors and MFM (NZ) staff.

We have also had some internal transfers, with Marcella Pitt moving across from the technical team to join the Central forestry team. With the departure of Aaron Calvert, Geoff Parsons has also moved from the Central harvesting team into the Central Silviculture Manager role. Geoff previously worked in the forestry team eight years ago, so it is good to be able to bring back his knowledge and experience into the team.

Noho ora mai



Industry attendees at the recent Resilient Forests Conference field trip in Kinleith Forest



Darrell Tahere

National Harvesting Manager

The production for the last quarter has been stable and consistent, with an opportunity to catch up. The Northern crews have been progressing well despite some challenging weather and windthrow. In Central, most King Country-based crews have started

moving back towards Kinleith Forest, except for two crews finishing up in Manunui and Aramiro Forest. Good progress has been made by roadline salvage crews. The Eastern crews are continuing to work in Stanley and Kerehutahi Forests, with one crew remaining in Waikawa Forest. Unfortunately, Hawke's Bay remains unavailable, and our focus on windthrow recovery continues in Wainui Forest.

Alby Kurei and Wayne Henman, experienced and seasoned trainer/assessors, will provide ongoing support to our manual tree felling and breaking out certification programmes in the

Northland and Central regions. Mechanisation has impacted these high-risk activities and it's taken a long time to get us to this point. You can read more about the mechanisation journey in this newsletter.

The positions vacated by Chris Deal, George Smith, Paddy Penwarden and Geoff Parsons were all successfully filled with new staff who bring a range of skills and experience that will add value to the team. Check out their profiles in the new staff section.

Another great initiative is the standardisation of harvesting crew signs in the central North Island as mentioned in Peter Auge's article.

On a final note, I wish to acknowledge the contractors and crews that ran whānau days and the MFM (NZ) staff that gave up their weekends to support them. It's awesome being able to share what you do every day with your loved ones. I look forward to more of these and hope to be involved as well.

Ngā mihi



JDL Contracting
Limited, Len Road
Kinleith Forest



Laresia Heke

National Distribution Manager

The distribution team have had another busy but productive and enjoyable few months.

We are pleased to have seen some great progress with two of our key focus areas - seatbelt monitoring and compliance, and fatigue and distraction monitoring.

A request for proposal process has been completed and contracts are now being prepared for our Taumata Central distribution log cartage work (circa 2.36 million tonnes per annum).

KiwiRail is introducing new 60' wagons into their fleet.

Seat Belt Monitoring and Compliance

There has been a continued focus over the past three months on the importance of wearing a seatbelt while driving; if you are moving then your seatbelt must be on!

Distribution contractors have continued to monitor driver fatigue and distraction events from the in-cab AutoSense Guardian System cameras. This video capture is being used to observe and record whether the driver is wearing a seatbelt. Seatbelt compliance, observed through this process, has improved significantly (52% to 95%+ since March 2023). Contractors have taken various steps to ensure that drivers are choosing to wear their seatbelt. These steps include things such as in-cab reminder stickers, messaging on in-cab data terminals and warning/engine override systems that prevent trucks gaining speed if their seatbelt is not worn. In some cases, it has been identified that drivers need a different seat or seatbelt to be fitted to their truck.

MFM (NZ) ran a series of well attended driver sessions with Jeff Fleury to reinforce the importance of getting home safely every day and the role that wearing a seatbelt can play in this.

Focus will continue on this important initiative and MFM (NZ) commend the distribution contractors for their openness and honesty in providing their monitoring information to us. Contractors have been asked to focus on ways to encourage the small percentage of drivers who still choose not to comply to make the right choice.

Fatigue and Distraction Monitoring

Driver fatigue and distraction events are monitored via the in-cab AutoSense Guardian System cameras and reported each month at a fleet level to the distribution team.

Fatigue events are recorded when a driver's eyelid is measured to be closed for 1.5 seconds or more, indicating that the driver may be suffering from fatigue. This alerts the driver in-cab with an audible noise and seat vibration, designed to be able to wake someone up. A notification is also sent to the distribution contractor of the recorded event.

Distraction events are triggered when the driver's face is not looking in the direct field of vision. It can include events like cell phone use, eating, singing, laughing, and looking out of

the window. All events are verified by AutoSense personnel. Each event shows a short video of rear and forward-facing camera footage and will appear on the distribution contractor's dashboard so that they can follow up with their driver. These camera events have been used in the seatbelt monitoring work and have also been an area of heightened focus for our contractors. There have been some good news stories of drivers having had sleep apnea identified and addressed as a follow up to these events being recorded.

June 2023 saw a large decrease in these events reported, which is exactly what we hope to see. This is because of increased focus by our contractors to ensure the safety of their drivers.

The team have started to recognise drivers with a MFM (NZ) safety award jersey to congratulate those who have had no recorded events for the month and who have travelled a significant distance during the month. The distribution supervisors have had the pleasure of presenting these awards, all of which have been greatly appreciated and gladly received. We plan to continue to recognise safe driving behaviour in different ways in the coming months.

Recipients of the Safety Award March – May 2023:

- Matt Lusty
Aztec Northern
- Terry Dewhurst
Graham New
Amandeep Singh
Mark Holmes
Aztec Centra
- Alcorido Cabatingan
Alistair Todd
E-freight
- Mitchell Manuera
Clark Van Doorne
WWT
- Steve Smith
SLL
- Joseph Fuentes
Holmes Group Northern



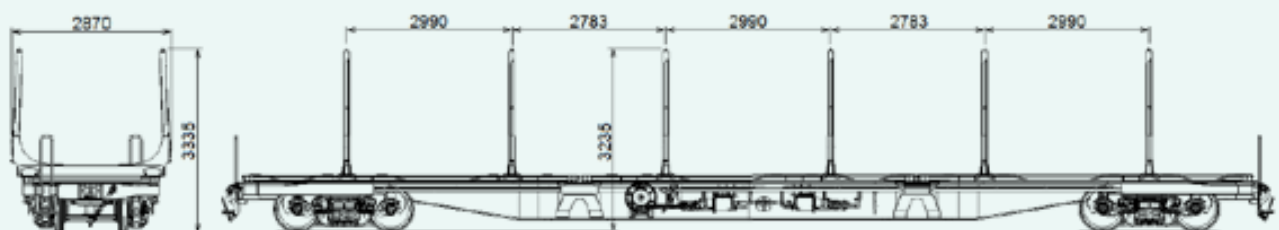
Joseph Fuentes – Award Recipient

KiwiRail 60' FIB Wagons

At the end of July 2023 new longer KiwiRail wagons will be trialled at the Kawerau Processing Yard. The intention is to have them fully operational in the system soon after. These wagons will also be implemented at Kinleith Log Yard once KiwiRail have additional wagons ready to put into operation. These are a larger three bunk wagon to replace an aging 40' wagon (two bunk) fleet that will be retired. The wagons have a maximum payload of 46.8 tonne.

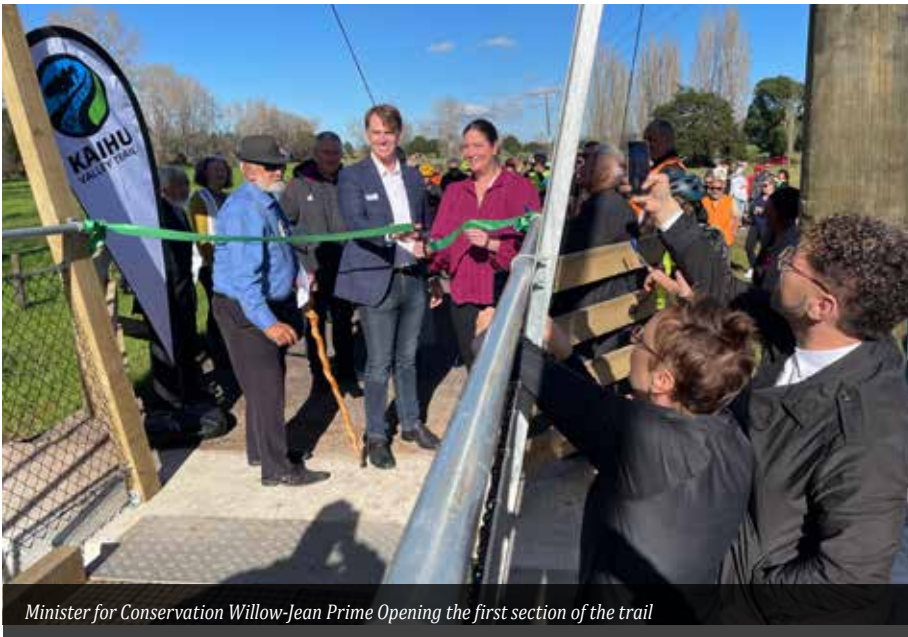
The distribution team wish everyone an enjoyable and safe second half of 2023.

Noho ora mai





Community



Minister for Conservation Willow-Jean Prime Opening the first section of the trail

Kaihu Valley Trail (Stage 1) Officially Opened On 10 June 2023

By Peter Houston - Silviculture Manager, Northern/Eastern

The Kaihu Valley Trail is a walking and cycling track following sections of a historic railway line built in 1896.

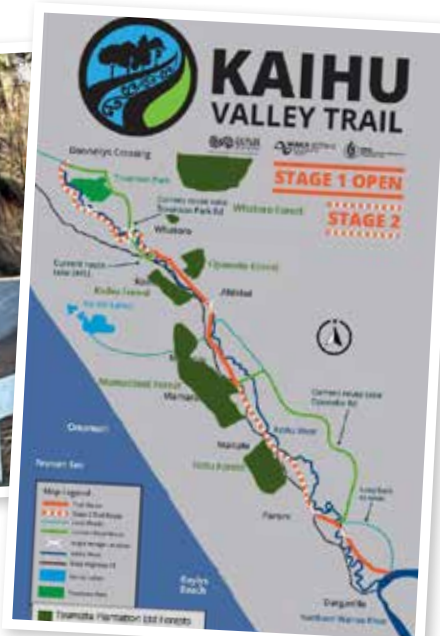
This serviced the kauri logging and sawmill industry between Dargaville and Donnellys Crossing.

The trail follows the Kaihu River through farmlands and forests in the Kaihu Valley and passes several Taumata Plantations Limited forests. When completed, the trail will be 46km (28 ½ mile) long.

The Kaihu Valley Trail is also part of the longer Heartland Rides/Kauri Coast Cycleway. This explores Te Tai Tokerau/Northland through our scenic landscapes and small towns, crossing between two harbours, rural villages and passing tall, towering kauri forests.



Above: A section of the Kaihu Valley Trail.
Right Kaihu Valley Trail Map.



Competition

Winner of Best Article in the April 2023 Newsletter

By Helen Moffatt -
Administrative Coordinator,
Tauranga

*Congratulations to Dayle
Filer for his article entitled:
The Wrath of Cyclone
Gabrielle - Hawkes Bay
Forests.*

Cyclone Gabrielle caused significant damage in so many ways and it must have been truly heart-breaking to come across scenes like this. As the clean-up, rebuild and recovery continues our thoughts still go out to those personally affected. This article highlighted only the tip of the iceberg as to the extent, flow on effect and havoc Cyclone Gabrielle caused. What is to be highly commended is the way businesses and individuals rallied around to support others in any way they could.



Remember anybody
is eligible to win and
another \$50 gift voucher
will be awarded to the
person who contributes
our favourite article from
this July 2023 edition.
If you have a favourite,
please email Helen:
hmmoffatt1@manulife.com

Export - China

Articles by Lance Maclellan - Sales & Marketing Manager, Tauranga



Chinese Port Visit

In June, MFM (NZ) and AVA Timber visited one of the key Chinese log discharge ports, Xinminzhou, on the Yangtze Delta. This is a dedicated log facility with five log berths, harbour cranes and grapples for vessel discharge, and on-site sawmills/processing.

Year-to-date, AVA Timber has delivered over 375,000 JAS to Xinminzhou which represents over 30% of their log imports and a 50% growth over previous years.

During the visit, the Eastern Cape, a Pacific Basin vessel, arrived. This was carrying over 28,000 JAS of AVA Timber cargo from Port of Tauranga, including a full debarked deck from Taumata

Plantations Limited.

Jiangsu Xinminzhou Harbour Corporation are a key partner for AVA Timber. We aim to build a more collaborative relationship with them over the coming years in order to access our end-user customers in the region and support the port's ongoing development.



Top: Harbour cranes and grapples used to discharge logs onto the berth.

Left: Xinminzhou Port layout.

Right: Pacific Basin vessel the Eastern Cape.





A popular stool design featuring a pine seat with douglas fir legs.

Chinese Furniture Factory Visit

During a recent market visit to China, MFM (NZ) and AVA Timber representatives visited Jinghang Forest Products. This is a furniture manufacturer who supply their own range of furniture and home products into the Chinese domestic market as well as being a key supplier to IKEA.

Jinghang favours supply from New Zealand. In particular, that of AVA Timber from Port of Tauranga as they are the only current log exporter capable of providing FSC-certified cargoes – FSC being a key requirement of supply to IKEA.

Jinghang have a fully integrated site including sawmill, kilns, edge-glue panel plant, furniture factory, design studio and showroom.

As an 'end-user' with a longer-term view and secured demand, Jinghang Forest Products are an ideal customer for AVA Timber and MFM (NZ) to supply moving forward.



Chinese Market Visit

In recent weeks, representatives from AVA Timber and MFM (NZ) travelled to China (New Zealand's largest log export market) to visit with customers, ports and members of the supply chain. This was one of the first visits to China by New Zealand log exporters since the COVID-19 pandemic.

Seven cities and regions were visited over 10 days. The group travelled over 2,000km across China to look at sawmilling operations, log stock and log quality.

The visit was timely with concerns over inventory levels verses consumption rates being front of mind for all in the supply chain. Customers were interested to discuss supply levels currently in New Zealand and what to expect over the balance of 2023 and into 2024.



A typical Chinese sawmill unit working - the first stage of breaking down the log.



Above: Various product examples from the Jinghang showroom.

Bottom: Edge-glued panels and boards stock. Inserted: Edge-glued panel examples.

Top: A multi-rip saw station, where wood is manually fed through post-breaking the log down. Bottom: Delivered logs at a sawmill, ready to be sawn. Insert: A potential out-of-spec log highlighted by a customer in their yard.

Harvesting

Taumata Plantation Mechanisation Percentages by Operation



Mechanisation Journey

By Darrell Tahere - National Harvesting Manager, Tokoroa

This graph for Taumata Plantations Limited (TPL) is impressive. It shows where we have been sitting between 80% to 100% for the last two years. What appears simple today, was not the case nine years ago, when you look at the complexity of the opportunity, the technology and upskilling required to make it work. Many, as in most, didn't think it could be done.

The mechanisation sub-committee was created, with the objective to 'increase the level of mechanisation in the business to improve Health and Safety and productivity through closer collaboration with MFM (NZ) and contractors.'

Our goal was to 'achieve 100% mechanisation in ground base and 80% mechanisation in cable operations by December 2014.'

This strategy brought about the design and development of the Rotorua-based EMS Tractionline as well as several other units that were developed by contractors and small engineering firms (see individual systems for details).

This committee was made up of:

- **Mick Theobald** - Harvest and Distribution Manager, Northern Region
- **Dennis Bomford** - Engineering Manager, Central Region
- **Hamish Berkett** - Harvesting/Engineering Forester Southern Region
- **Ross Wood** - Harvesting Contractor, Southern Region
- **Dale Evers** - Harvesting Contractor, Southern Region
- **Lars Rosewarne** - Harvesting Contractor, Northern Region
- **Mike Alexander** - Harvesting Contractor, Central Region

The committee was tasked with:

- Ensuring guidelines were in place:
 - Collaborate and share learnings with industry stakeholders, WorkSafe, University of Canterbury, manufacturers, and other forest companies.

• To Educate:

- Operators
 - Understand the physics involved
 - Change their behaviour and techniques
 - Monitor stress/fatigue levels
 - Ensure a thorough knowledge of wire cable / rigging setup and maintenance
- HFM Staff
 - Review planning and infrastructure requirements
- Measure performance and celebrate milestones
 - Monthly data capture from crews
 - Won the Stars of Excellence Award 2016.

Individual Systems

Remote Operated Bulldozer (ROB)

The Remote Operated Bulldozer (ROB) is manufactured by Rosewarne Cable Loggers Ltd and forest machinery engineer, Lain May. ROB is in Northland and is the intellectual property of Rosewarne and May Limited, New Zealand.

The ROB utilises a hydrostatic drive allowing greater operator control, including measuring how much rope goes out and how slow or fast it unravels. The ROB is equipped with tension monitors that allow the operator to check the winches are functioning correctly. The ROB has a detection system with instant shut down of the drums in the event of rope jumping off winches. The ROB is also electronically alarmed meaning the machine will automatically shut down if water overheats, the oil runs out, or a hose blows.



Remote Operated Bulldozer (ROB) Winch-assist.

Lars Rosewarne says the main benefit of a bulldozer rather than an excavator is the low centre of gravity, providing increased stability. Bulldozers can also use the blade as an anchor, lowering the chance of movement.

Electrical and Machinery Service (EMS)

The Electrical and Machinery Service (EMS) Tractionline winch-assist is designed, manufactured, and tested in Rotorua. EMS was founded by Chris Hancock in 1995 who is currently the managing director. EMS specialises in electric over hydraulic systems such as the Harvestline, Tractionline, Hawkeye and general forestry machine guarding.

Tractionline is a twin winch system running constant tension with large back up and emergency brakes that are controlled via wireless communication between the two machines: WAM and SSM. The designing, manufacturing, and testing employs multiple computer-aided design (CAD) and computer-aided manufacturing (CAM) and computer-aided stress analysis procedures. The designs use the highest quality proprietary components available. Multiple safety redundancies and a real time operator display interface ensure safe operation of the system.



Falcon Forestry Equipment (FFE)

The Falcon winch-assist system is produced in Nelson by DC Equipment. DC Equipment was founded in 2006 as DC Repairs by Dale and Christine Ewers. DC Equipment produces a range of different forest harvesting products such as Falcon winch-assist, Falcon claw, Falcon grapple camera and Falcon skylight. The Falcon winch-assist system is a single drum unit with a 28mm rope that can be fitted to any excavator over 27 tonnes.

The FFE winch-assist system was developed in the forest with collaboration from logging crews. Feedback from contractors has allowed DC Equipment to create an uncomplicated, simple to operate and easy to maintain system. The FFE winch-assist is designed to be a multi-purpose machine equipped with a quick hitch that allows digging, loading, and shovelling.

FFE has put a lot of emphasis into safety features that have been developed to eliminate risk while operating the FFE winch-assist.



A significant safety feature is the over speed alarm triggering a rope management system in the winch which automatically slows it down to prevent shock-loading.

There are many other alarms such as a movement alarm to alert the operator if the winch machine experiences any movement, plus a cab door tamper detection alarm, over tension alarms, drum over speed alarm/arrest and a maximum rope pay out alarm/arrest. The FFE also has a live feed camera system for the operator monitoring the engine bay and winch drum.

ClimbMax

The ClimbMax steep slope harvester was developed by Trinder, a Nelson-based engineering and electrical firm and Nigel Kelly, a logging contractor.

The ClimbMax steep slope harvester is an excavator equipped with a felling head and a single winch mounted to the excavator base. The ClimbMax can be classed as a rebuilt excavator, with every component except the radiator totally remodified from the ground up, and eight tonnes of weight removed to lower the centre of gravity at the base. One modification is a high tensile steel boom with a longer 10m reach attached to the grapple. This addition is to increase reach and aid manoeuvring on the slope.



ClimbMax International Ltd

The ClimbMax has a 42 tonne gross weight, including a 2.3 tonne head unit, and 190kW power output. The winch holds a 380m cable with a 15-tonne line pull.

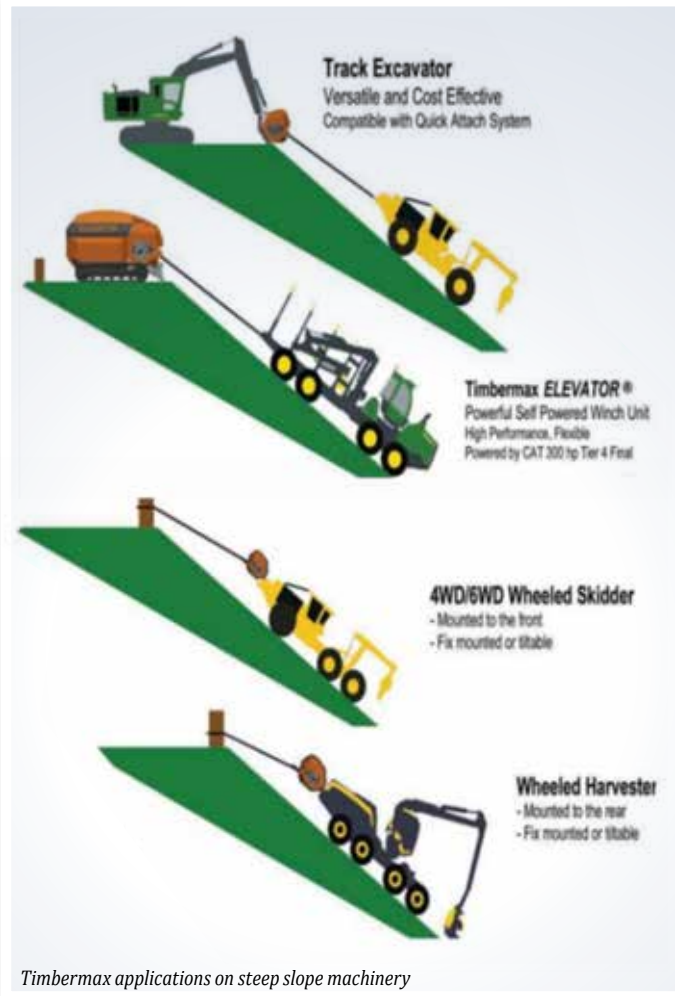
International Systems

Winch-assist was first established in Europe in the late 1980s for forwarder extraction. The winch assisted forwarder's aim was to match the productivity of harvesters on slopes. In the early 2000s as steep slope fibre supply increased, European winch-assist systems expanded to harvesters.

The common European winch-assist manufacturers are Haas, Herzog, Komatsu, Ecoforst and Konrad. It is common to see European winch-assist systems bolted to machines working on

the slope. This is achievable due to the lightweight machines used in forest operations.

The Timbermax is reported to be a robust, powerful, and compact winch unit that gives loggers versatility depending on the harvesting equipment available. The different applications are displayed below.



The T-Winch is a traction winch system, developed in Austria by Ecoforst. The CEO of Ecoforst is Marcus Krenn, a harvesting contractor in Austria. The T-Winch is a self-propelled traction winch which has 500m of cable incorporated within it and allows a harvesting machine to be attached to the T-Winch. Tension on the cable is constantly maintained as the computer controls an advanced closed hydraulic system, preventing the cable from sagging or bouncing. The smooth and reactive operation avoids shock loading on the cable and ensures maximum traction on slopes.



2019 T-Winch



Getting It Done Together

By Peter Auge - Harvesting Manager, Rotorua

A health and safety initiative from distribution was to standardise MFM (NZ) harvesting crew signage across all clients and regions.

Thanks to Geoff Parsons for coordinating the design and purchase of signs and frames. Numerous working bees were held in both Rotorua and Tokoroa to assemble the signs.

Special thanks go to Peter Myers for providing the tools and Tane Purcell for helping. Thanks Darrell, for rolling up your sleeves too.



New signs deployed at Gibbs 73 in Kererutahi Forest

Forestry



Ngāti Kea Ngāti Tuara representatives

Ngāti Kea Ngāti Tuara Field Trip – Kinleith Forest

By Sally Strang - Environmental Manager, and Shiree Marshall - Harvesting Forester

MFM (NZ) recently had the pleasure of hosting iwi representatives from Ngāti Kea Ngāti Tuara in Kinleith. Ngāti Kea Ngāti Tuara have occupied the area of the Horohoro bluffs for over 500 years, including the north-eastern side of Kinleith Forest. Māori Land Court records confirm Ngāti Kea Ngāti Tuara's association with a number of historic sites in Kinleith including pā sites and urupā. A number of records talk about the village Omaruapu which has not been definitively located, but is thought to be near the redwood stand on Galaxy Road.

The field trip was planned for iwi representatives to visit some sites of importance to their heritage. Given recent weather and a very average weather forecast, the team were relieved that early morning showers cleared to an unexpectedly fine day. The group visited the historic Waimaruru urupā on Mamaku South Road near Mokaihaha, some historic burial sites on Stroat Road (associated with Omaruapu village) and Te Urewera Pā on Kangaroo Road above the Tikitiki Gorge. An added bonus was the attendance of retired Environmental Forester Robin Black who shared some of his legendary knowledge with the group.

Given a lot of recent harvesting in the area, the group commented on the dramatic change to the landscape and views since visits several years ago when the surrounding trees were still standing. They particularly commented on the high standard of the recent harvesting undertaken by Tombleson Crew 85 around the historic sites in the Stroat Road area. Having been involved in pre-harvest discussions it was nice to be able to share with them the end result and experience their appreciation that the sites had been so well managed and protected through harvest.

Well done to all involved.



One of the protected historic burial sites near Stroat Road post harvest. High stumps were used to demarcate the site boundaries along with historic site pegs and tape.

People



Lions Club of Tokoroa – Pensioner Firewood Scheme

By Scott McCabe - Distribution Planner, Tokoroa Office

Since 1981 local forest owners and farmers have donated unsellable pulp logs to the Lions Club of Tokoroa for their Pensioner Firewood project. This is a tradition continued by Taumata Plantations Limited and MFM (NZ).

Each year up to 60 carefully-vetted vulnerable pensioners who meet strict criteria are delivered up to three loads of free firewood to keep their homes warm over the cold Tokoroa winters. This ensures their limited income is spent on other areas of essential living.

Local log cartage contractors deliver the wood for free to a depot provided by the district council. The periodic detention team help process the logs and Lions Club members deliver and stack the load(s) at each pensioner's home.

Without this combined help, some of these folk may have to make decisions on whether to eat or stay warm.



Ngā Pou a Tāne Summit

By Tane Purcell - Graduate Engineer

On 11 May I attended a summit hosted by Ngā Pou a Tāne at Scion. The summit was hosted for Māori leaders across Aotearoa to inform a Rautaki Ngahere Māori (National Māori Forestry Strategy). This is a national vision and strategic intent for the collective forests, forestry, and wood processing assets owned by Māori.

Over 80 Māori forestry industry delegates attended from throughout the forestry value chain. This included Māori land trusts, incorporations large and small, forest nursery owners, logistic companies, silviculture and harvesting operators, researchers and scientists.

The wānanga/summit allowed the Ngā Pou a Tāne board to hear the opinions of Māori throughout Aotearoa. As the first summit, it also allowed the board to measure the engagement of its people. It showed high involvement and backing from everyone attending. A key takeaway for me was that the whenua does not change. However, the management, offices and government around it will.



Ngā Pou a Tāne wānanga board and attendees

With the two purposes currently set by Ngā Pou a Tāne, the landowners will be able to create strategies that suit their values. Their purposes are:

- Develop and maintain an augmented support structure through regional branches that enable and empower Māori in and into the forestry value chain
- To partner with the Crown with a constructive and powerful voice, representing Māori communities and landowners to develop policy that furthers Māori aspirations in the forestry value chain and obviate policy impacts both prospective and retrospectively.

Health and Safety

National Recognition of Health and Safety Innovation

By Lance MacLennan
- Sales & Marketing Manager, Tauranga

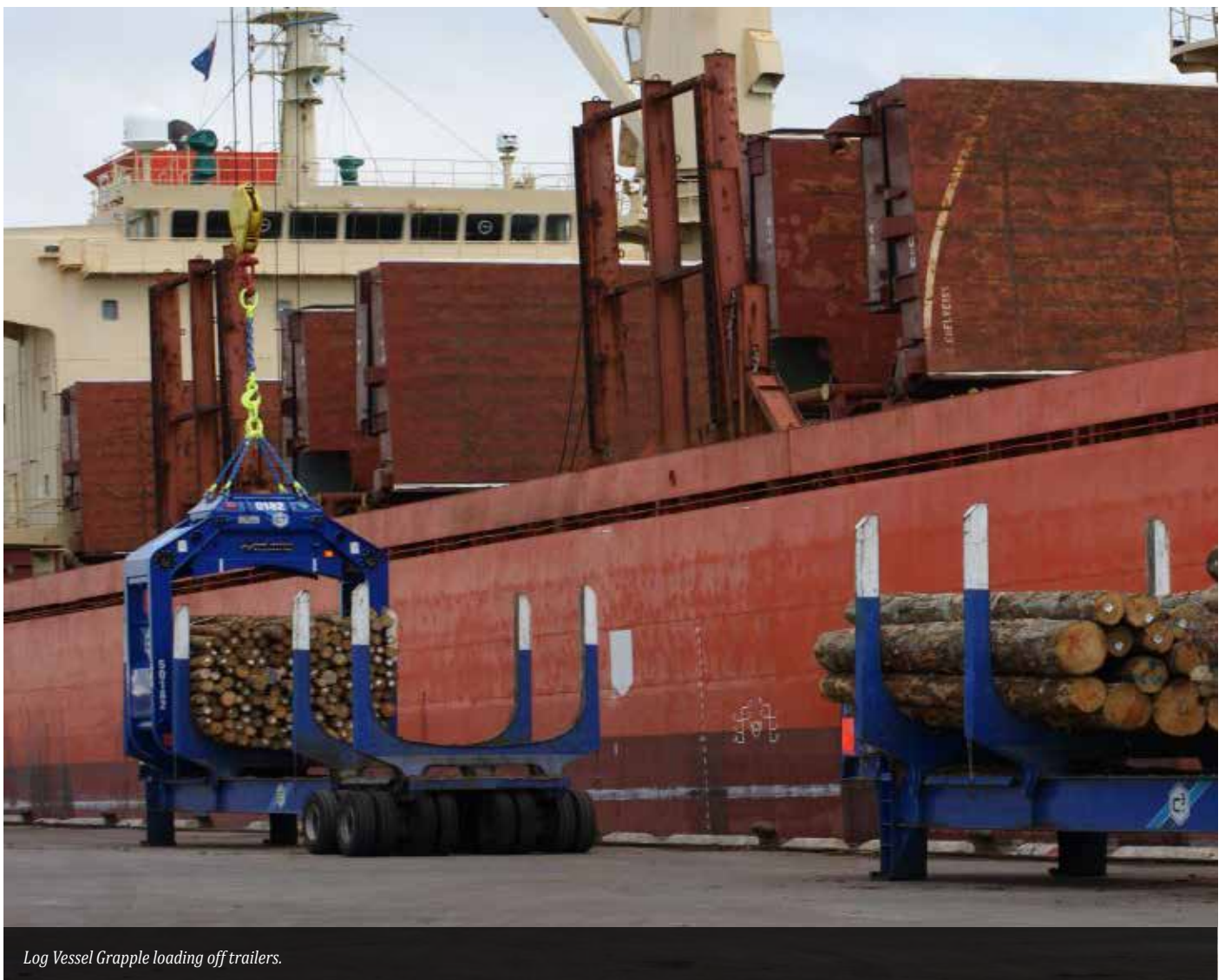
In June, MFM (NZ) attended the New Zealand Health and Safety Awards. This was in support of C3 who were nominated under the Innovation Section for the Log Vessel Grapple (LVG).

The LVG has been a key health and safety initiative that has reduced risk and increased productivity across the berth. It reduces the use of wires to lift cargo onto the vessel. It reduces the use of wires to lift cargo onto the vessel, and critically, removes people from the berth and under suspended loads.

AVA Timber vessels have loaded over 680,000 JAS year-to-date in Tauranga using this method. That equates to 78% of volume shipped, with the balance being pre-slung cargo for Taiwan and long-length A-grade for Japan.



The New Zealand Health & Safety Awards gala dinner.



Log Vessel Grapple loading off trailers.

Environmental



Blessing attendees with Panui Ridge in the background

Waiotahi Blessing

By Michael Elix - Engineering Manager, Rotorua

A blessing ceremony recently took place in Waiotahi Forest to mark the start of the second rotation clearfell harvest there.

The ceremony was conducted by local representatives of Te Ūpokorehe. Attendees included Sam Wikotu, Wallace Aramoana, Haami Aramoana, Georgina Aramoana and Christine Martin.

In his opening address, Sam Wikotu explained that the rohe of Te Ūpokorehe extends from Maraetotara (Ōhope) in the west to the middle of the Waioeka River (Ōpōtiki) in the east. The forest lies within the heart of this tribal territory and boasts a very rich archaeological and cultural history.

The area where harvesting is set to take place is known as Ponuahine. It features a number of recorded archaeological sites on ridge crests overlooking the Waiotahi River and Ponuahine Stream. The sites are associated with former Māori occupation. Use of the area will be protected in accordance with an archaeological authority issued by Heritage New Zealand Pouhere Taonga.

The karakia was performed by local kaumatua Wallace Aramoana. On behalf of the gathering he sought to invoke spiritual guidance and protection for the upcoming harvest and all other mahi associated with these operations.

Also in attendance at the ceremony were forest neighbour

Lynette Rowe and representatives of Gibbs Logging, Gaddum Construction and MFM (NZ).

Thanks to all those who attended. Special thanks goes to Reuben Hawtree who organised the event and the kai that followed.



Some of the attendees Kaumatua Wallace Aramoana (Centre) and Lynette Rowe (right).





Hydrogen Fuel, Is It Our Future?

By Geoff Gover, Whangarei

For the last decade I have been following the development of hydrogen as a future fuel. In recent times Hiringa Energy have been introducing the opportunities hydrogen presents to a number of Manulife staff.

Since 2019 global manufacturer JCB have been working on potential diesel/petrol replacements for the heavy plant they currently produce. Worldwide there has been a move to electric-powered vehicles. However, this is not always suitable for all modes of power.

JCB have around 500,000 pieces of plant out in the world that have telemetry fitted which allows them to analyse the use of that plant. What they have found is the small excavators (two tonne range) generally only work for around 1.5 to 1.8 hours per day. This type of plant is ideally suited to being electric-powered as the use is low and is easily charged overnight. Also, this plant generally works in residential areas and running on electricity means it's very quiet with no emissions.

As the plant gets larger, the daily workload extends. Typically, a 20 tonne excavator works on average 8.2 hours. To run this type of plant on electricity would require 12.5 tonne of battery and take almost two days to recharge. It's not practical. JCB then moved to review the opportunities of other forms of energy.

Hydrogen is the most promising. It is the most abundant element in the world but does require quite a lot of energy to capture. The next stage of the JCB work in 2019 was to modify a diesel motor to run on hydrogen. This was completed before Christmas of 2019 but resulted in a number of negative attributes. Diesels have high compression and mixed with the combustibility of hydrogen, produced high temperatures that resulted in nitrogen oxide being emitted. This gas is worse for the environment than carbon dioxide.

By early 2020, JCB decided to start from scratch and design a purpose-built hydrogen combustion engine that would match the torque and power equivalents of a similar diesel motor. After much trial and error, they have now produced around 100 engines that are undergoing field testing as a prototype.

They have encountered many issues along the way, including:

- Getting enough oxygen into the motor, solved by a turbo that runs at 250,000 rpm

- Dropping compression resulted in the need for a spark. Initial spark plugs burnt out in hours due to the temperature hydrogen burns at. A specialty spark plug manufacturer has now designed a plug that last thousands of hours
- Removing the main emission from the combustion from the motor. As many will know, when you burn hydrogen and oxygen the output is water. But you don't want the water being held in the motor. A specially-designed oil has been developed that helps with cleansing the motor of emissions.

Recently while holidaying in the United Kingdom, I was able to meet the JCB team that have been developing this world-leading technology and view one of their prototype motors. It was very interesting to discuss the many issues they encountered during development but also will face us in the future as we start the process of phasing out our reliance on oil-based fuels.

Incidentally, whilst visiting the plant they showed me the world's fastest diesel-powered vehicle.



Financial Wellbeing

Cost of Living – Tips to Save Money

By Lynda McCalman - Risk and Assurance Manager

New Zealand is in the midst of a cost-of-living crisis. Our power bills, the weekly grocery shop, fueling the car, rent and mortgage rates – the cost of just about everything in New Zealand continues to increase.

The cost of living has risen 7.7 percent in the past year and it is hitting Kiwis hard. Inflation – one aspect of a cost-of-living crisis – has decreased but still remains high at 6.7 percent for the year to March.

No one could blame Kiwis for feeling stressed and anxious. Some may feel helpless in the face of rising costs. Below are a few potential money-saving methods that may help us all end the month with a bit more cash.



Groceries

It's a nasty shock when you get to the checkout and realise your weekly shop – the same items you buy week on week – have just gone up again.

Plan before you shop

Before you even step foot in the supermarket, create a weekly meal planner and/or make a list of items you need and stick to it. Check the fridge, freezer and pantry before you head out to eliminate the chance of doubling up. Doing your food shopping just before closing time in the supermarket will yield you great savings, with fresh items such as bread, fruit and vegetables being reduced for a quick sale.

Online shopping is great for avoiding impulse purchases. You can shop in season and stick to a budget with the checkout calculator.

Buy own brands

Be supermarket savvy. Shop around and see who has the best priced products. Many of us shop with emotional loyalty to a product when a budget brand version (e.g. Pams or Value) can cost significantly less.

Using an app to assist may be helpful. Grocer NZ is a grocery price comparison

app for Kiwis. Check it out on Google Play or the Apple App Store!

While shopping, don't forget to check the price per kg on your items. While price and packaging can be very misleading, supermarkets will tell you the price per weight or quantity on the food label.

Use your loyalty card

Whether you have a billfold/purse full of cards for your favourite stores or have the apps downloaded into your phone's 'wallet', supermarket loyalty schemes can provide value savings. The New World and Countdown cards will get you discounts at the till. Use them every time you shop and those discounts soon accumulate.

Organise your fridge & freezer

Making good use of food you've bought and minimising the amount you throw away because it's gone off before you've used it, will also save you tangible amounts of money. Using your freezer smartly too (being able

to reach in and use only what you need each time), is a real money saver. Batch cooking meals and freezing extra portions and leftovers for another time will help reduce your spend.

Eat at home

Cook as much as you can at home. Use the food you have purchased and save. There are a lot of recipes online if you need inspiration.



Fuel

Petrol is now more expensive, with the Government dropping the 25¢ per litre fuel subsidy. The subsidy for road user charges for diesel vehicles has also ended.

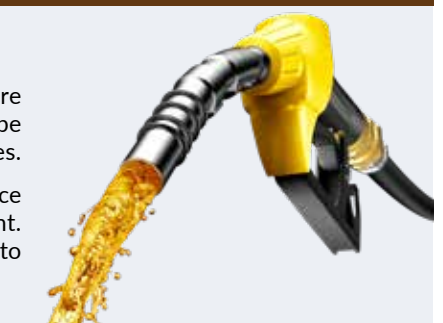
Drive slower!

Reducing your speed on the roads could save you up to 20-25% in fuel. Trying to drive more smoothly, with less hard accelerating or braking, will mean your engine doesn't have to work as hard, using less fuel as a result.

Don't use your boot for storage!

If you have bikes, golf clubs or furniture kicking about in the boot, you could be increasing the amount of fuel your car uses.

Regular services and tune-ups could reduce your fuel consumption by up to 4 per cent. Under-inflated tyres are a contributor to increased fuel consumption.



Track down your cheapest local fuel

Get into the habit of checking the prices on the board at all the petrol stations on your usual runs and make sure you fill up at the cheapest that day. The savings soon stack up. Download a petrol prices app such as Gaspy. Great for helping Kiwis find the cheapest fuel prices closest to them.



Power

With the winter chill setting in, it can be a challenge to stay warm and cosy when you are on a budget.

Check your plan

Visit powerswitch.org.nz and make sure you are with the best supplier for your usage.

Some people save around \$600 a year just by switching plans - and that's without changing suppliers.

Use free power

Most providers offer an hour or more of free power a day so make sure you use it - especially in the colder months. Have the heat pump set to warm up the house and use appliances such as the dryer and dishwasher during the free period.

Clean your heat pump filter

Have an annual maintenance plan in place to clean the filter on your heat pump or other heating mechanism. You'll notice an immediate improvement in their performance.

At the same time, set the thermostat to no more than 18-20°C for efficient running.

Turn off unused appliances

Appliances use a small amount of power while waiting on standby but add all these devices together and the costs mount. **Go through the house and turn off anything you are not using.**

Hot water cylinder

If you have a hot water cylinder, **check that your water isn't too hot** - it needs to be 60°C to prevent bacteria growing but doesn't need to be any hotter.



Household Costs

Other household expenses such as your mobile plan and data, gym memberships, entertainment, insurances, and the basics (e.g. haircuts) are also on the rise.

Look at the big picture - and the big costs

Are you a two-car family that could function with just one? It might mean using public transport and the occasional Uber, but it saves not only on the cost of the car but also insurance, road user charges and petrol. The same goes for any television/movie subscription or gym membership you hardly use. Simplify what comes out of your bank account each month and breathe easier.

Get more support

There are organisations who provide free, in-depth and confidential support to help you make the most out of your finances. This could include assistance with preparing a budget so that you can

set money aside for things you know are coming up and set up automatic payments for just after payday, so you aren't tempted to spend it.

SORTED (sorted.org.nz) is an online site that provides a free budgeting tool, debt calculator and mortgage calculator, as well as other articles and blogs about reducing living costs.

MONEYTALKS (phone: 0800 345 123) offers a free service for those needing help with day-to-day money matters such as managing debt or budgeting.

EAP SERVICES (phone: 0800 327 669) offers appointments with a Financial Advisor who can tailor support to your specific needs. Appointments are confidential, there is no cost to you, and they can be conducted online, in person or via a phone call.

Refer also to the following article by Jo Burrell on Looking After Your Financial Wellbeing.





Images courtesy of EAP Services.



Looking After Your Financial Wellbeing

By Jo Burrell - Human Resources Manager

Hopefully each of you reading this knows about our Employee Assistance Programme (EAP) that provides confidential counselling that is fully funded by MFM (NZ). EAP can help with any work or life issues and to improve your health and general wellbeing.

But did you know that EAP can also provide Financial Advice?

Financial counselling is about much more than just 'money' and the EAP Financial Advisors can give practical advice and tools in a relaxed and easy to understand manner to help you achieve and maintain financial wellbeing. The Advisors can assist you in managing your financial stress by assessing how best to resolve any money issues and, when appropriate, where to go for specialist help. They are impartial in their recommendations and the information and guidance they give is aimed at helping you to resolve and/or improve your financial situation.

Examples of financial help you can get include:

- Budgeting
- Insurance advice (general, life)
- Debt management

- Redundancy transition
- Retirement planning
- Buying a house/mortgage restructure
- Relationship separation or bereavement
- KiwiSaver
- Investment

Appointments can be in person, by video or by phone. To book an appointment call 0800 327 669 or visit eapservices.co.nz



People - Introducing Our New Staff



Karl Boobyer

Environmental Forester, Tokoroa

Hi all! I've recently joined MFM (NZ) as an Environmental Forester based in Tokoroa.

I spent the last 11 years working in the oil and gas industry in Queensland, Australia. During this time, I held a variety of environmental roles focusing on planning, approvals, construction, operations, decommissioning and rehabilitation.

I returned to New Zealand with my partner, Simone, and our two girls Isla (6), and Tilly (3). We're all very happy to have traded the city for country living on the family farm in Matamata. Outside of work I spend most of my spare time renovating, helping on the farm and enjoying the outdoors, mostly hunting, fishing, and playing golf.

I look forward to continuing my environmental career with MFM (NZ) and hope to meet many of you in the near future.



Lani Dawson

Operations Support Administrator, Rotorua Office

Kia ora koutou katoa. My name is Lani, and I have recently joined the Engineering and Harvest Planning team as the Operations Support Administrator.

I have worked in the forestry industry for 13 years. I have held multiple roles including receptionist, harvest administrator and my recent role as a GIS/Land Information Officer.

I grew up in Onepu and did my schooling years in Te Teko and Kawerau, then made the big move to Rotorua to work. My partner, Kieran, is born and bred in Rotorua and runs the family construction company based here in Rotorua. Together we have two daughters, Penelope (10) and Grace (4) and a stepdaughter, Shari (15). As a family we spend a lot of time getting out and about on road trips, watching the girls' sports and spending time renovating our house.

I look forward to meeting the rest of the staff at MFM (NZ) and can't wait to see what exciting and new challenges come my way.



Shane Learmond

Harvesting Forester, Whangarei

Shane, hailing from Feilding and raised in Whakatane, commenced his forestry career at Interpine in 1993. After a few years, he transitioned to harvesting where he amassed knowledge in groundbased and cable (tower and swingyarder) operations. Throughout his tenure, Shane has assumed various roles – from being part of the crew to eventually overseeing operations – with arduous dedication.

Shane resides in Glenbervie and is married with three children. His pastimes include sportfishing, recreational fishing, diving, hunting, and duck shooting.



Lana McNaul

Valuation Analyst, Rotorua Office

Greetings everybody. My name is Lana McNaul and I have recently joined the RST team as a valuation analyst in the Rotorua office.

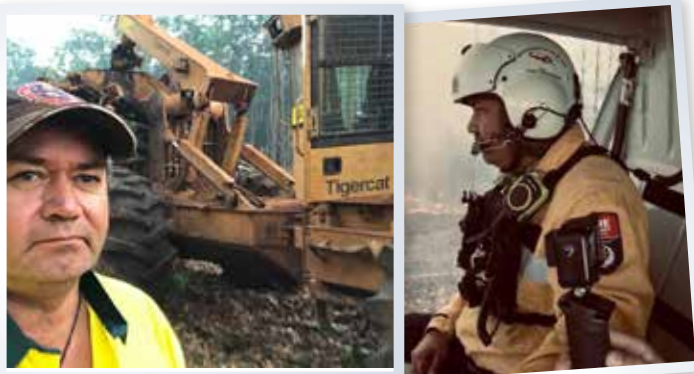
I am a graduate of the University of Canterbury School of Forestry (2011). I worked for PF Olsen in an operational role for three years, prior to starting a family. I have three children aged 4, 6 and 8 and live on a dairy farm south of Rotorua in Waikite Valley. Since having children I have helped manage our dairy operations, worked for a local logging crew and most recently worked as an analyst with Margules Groome Consulting.

When I'm not working, I enjoy spending time with family and friends, getting outdoors, travelling, gardening and playing squash.

I would like to thank everyone for the warm welcome I have received since starting. I am really enjoying the business culture and look forward to making a positive contribution to the company.

My family and I on the way to Lake Ohakuri. 2022 trip down the Baja Peninsula, Mexico.

People - Introducing Our New Staff



Logging and Fire Fighting on the Tiwi Islands, Northern Territory. Managing a controlled burn as Incident Controller for Fire & Emergency New Zealand

Jarron McInnes

Protection Forester, Rotorua Office

Tēnā koutou katoa,

My name is Jarron McInnes and I am a Protection Forester based out of the Rotorua Office.

I began my humble forestry career in 1985 at Esk Forest for the New Zealand Forest Service (NZFS). This was the best time of my life living in a camp and working hard, while learning all things forestry as part of a great adventure.

After the demise of the NZFS in 1987 I became a logger. Firstly in production thinning operations and then onto clear felling ops in the mighty Hawke's Bay, learning everything that ground-based and cable harvesting operations entails. I spent 26 years as a logger... another great time in my life. Some tell me now that I am an "old school logger" as we chopped and dropped whilst trimming down the log. The decision is still out whether I am to be classed as OLD??

After my logging career, I was appointed the first Resident Park Ranger for TECT All Terrain Park in Tauranga. In this position I was instrumental in establishing what the park is today – an achievement I am very proud of!

After that I travelled and worked in Australia at Tumut in NSW for Forestry Corporation Fire Operations. Then I worked on the Tiwi Islands, 80km off the coast of Darwin, in harvesting and firefighting operations. Not only did you have to dodge the smoke and the flames but also the crocs, snakes and every other animal that was trying to have a go at you.

Throughout these adventures, I have been involved in fighting and lighting fire – managing them all over the world and just about in every state of Australia. I hope that over the coming years I can train and inspire the younger foresters within our organisation and industry to become confident in fighting, lighting and managing fires on all scales as we all head into a different climate.

I have three kids. Brooke, 32, is a world banker based in Melbourne. Sam, 21, is doing a heavy diesel mechanics apprenticeship and Charlie, 17, works for Kmart as a storeman.

Finally, in my spare time my partner and I jet-ski and E-MTB from our bach in Mangakino where you will find us most weekends in the summer. Both of us belong to the Rotorua Volunteer Fire Brigade which we both love as a way of giving back to our community.

Ngā mihi



Nathan Morshead

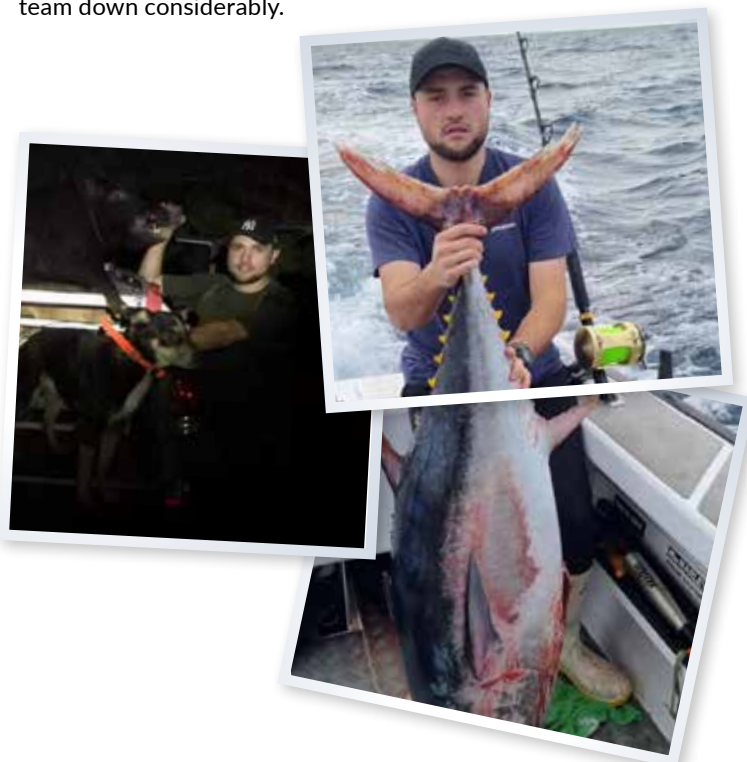
Harvesting Forester, Tokoroa

Welcome Nathan Morshead who has joined us as a Harvesting Forester based in the Tokoroa office.

Nathan is filling Geoff Parsons' role as he has recently moved to a new position in the forestry team.

Nathan completed the Forestry Management Diploma at Toi Ohomai and has been working for PF Olsen as a Harvesting Supervisor for the past two and a half years.

Rotorua is home for Nathan who is a keen hunter, enjoys the outdoors and is looking forward to his new role with MFM (NZ). Nathan also brings the average age in the Central harvesting team down considerably.





People - New Staff, Farewells



Alexander Thompson (TJ)

Harvesting Forester, Tokoroa

Hello everyone, I like to be called 'TJ' as I am known through the logging industry which has been my life for the past 20 plus years. I'm a father, husband and uncle to many kids even though they are not related through my bloodline. I love family time, gathering kai from either land or sea and love fishing from the beach or rocks. Rugby league has been a proud part of my life whether I am playing, mentoring or just coaching; the reward isn't just winning but seeing the joy it expresses in kids and adults. Currently I work out of Tokoroa with a great team of people throughout the building who are always supportive and there are significant figures that lend an ear to talk to. I challenge myself to grow, learn and enjoy myself in this company.



Sally Strang, Sarah Jane Luoni, Reuben Hawtree, Robin Black and Geoff Marshall

Safe Travels in Canada Sarah Jane

By Shiree Marshall - Harvesting Forester, Tokoroa

On Tuesday 23 May, Tokoroa staff (both past and present) joined contractors, local iwi and stakeholders to say "see ya later" to our respected work colleague, Sarah Jane (SJ) Luoni.

SJ has worked for us for over five years and although she did not come from a forestry background, she had a fantastic way of dealing with everyone she encountered in her role. SJ didn't take long to get her head around the forestry industry and was well versed in what was expected from our worksites. Her sparkling personality and strong focus on recognition held her in high regard with all. This ensured our company continued to receive great results in our council, FSC, PEFC and internal MFM (NZ) audits.

SJ is still working for Manulife as Manager, Sustainability, Timberland Investments. She will now be based in Vancouver, BC, where she will be closer to her partner, Matt.

She will still have the same email address so please drop her a line, she would love to hear from you. We wish her all the very best in her new adventure.

Contact Us

Manulife Investment Management
Forest Management (NZ) Limited
PO Box 13404
Unit B, 120 Hamilton Street, Tauranga 3141

Whangarei Office	(09) 470 1300
Tokoroa Office	(07) 885 0350
Rotorua Office	(07) 350 0080
Tauranga Office	(07) 571 7900



Manulife
Investment Management