

Manulife *Forest Times*

Brought to you by Manulife Investment Management Forest Management (NZ) Limited

Issue No.15 | APRIL 2024

Welcome To The First Edition Of 2024

By Chris Barnes - General Manager

I hope everyone had a great summer and enjoyed some nicer weather.

I have just returned from a market visit to China along with the AVA Board (see separate article). This was a great opportunity to meet AVA customers, ports and our sales agents in China. A standout for me from this visit was the genuine appreciation and support of the AVA brand and supply chains that sit behind AVA. Many of AVA's customers have invested heavily into developing higher-end products (e.g. furniture, housing, OSB) and there is a clear shift in demand in log grade and quality. We met one customer supplying furniture to IKEA, another to Harvey Norman and one customer building kit houses for supply into southeast Asia and Australia.

Unfortunately, we also observed a very weak construction sector that is unlikely to receive further government stimulus and this is putting significant downward pressure on log demand from New Zealand. Log consumption has been very slow to build after the New Year holiday in China and inventory levels are now over 4.2m m3 across ports. While this number is not a concern (it was 4.7m m3 at the same time last year), the daily offtake is very low and implies over 80 days of inventory on port. Supply from New Zealand will need to slow to match demand.

On a positive market note, AVA has recently announced a return of log exports to India with the first vessel scheduled for April 2024. The economic and demographic fundamentals in India are strong and we are excited about AVA being an early mover back into this market.

Later in April we will set up a call with contractors to provide a more detailed summary of the market and impacts on our operations.

There is a great photo in this edition from our recent company dinner of staff who have joined us since the previous meeting. I want to thank these staff for getting up on stage and sharing their story with the business. It was a pleasure listening to each of you introduce yourselves and backgrounds and



we are all very fortunate you choose to work with MFM (NZ). There is also a great photo celebrating 50 years in forestry with Marcel van Westbrook – congratulations Marcel on what is a fantastic achievement. In that time you have made a tremendous contribution to our clients, people and the wider New Zealand forest community.

We have had several more people join us at MFM (NZ) since our last edition and I would like to welcome Glen Kirk, Cole Grace, Jacques Pienaar, Rona Wheeldon, George Fanning-Ihaka and Andrea Batchelor. As always, please take the time to welcome our new staff when you get the opportunity.

Also on staff matters, we had three recent retirements from the finance department in Tokoroa. After 50 years of combined service Theresa Large, Wendy Post and Sharyn Newman had their last day on 31 January. These three ladies provided great support, friendship and service to the wider business over a very long tenure and we wish them all the very best in their well-deserved retirements.

In December we also said farewell to Lynda McCalman (Risk and Assurance Manager) and Toni Puntun (H&S Coordinator). Lynda did a fantastic job building our risk and assurance framework and decided now was a great time to enjoy the summer, watch some cricket and pursue several board positions. Toni has taken up a senior safety role with Williams and Wiltshire and it is great that her positive attitude and skills remain in the forest industry – congratulations Toni on your new role.

Thank you to everyone that took the time to submit an article for this edition. It is always interesting to see what is going on across our business and forest estate. The stories that you share are a good reminder that even with the current market challenges, forestry is a tremendous industry to be a part of.

Please feel free to give me a call (027 257 7260) anytime if you need anything or would like to have a chat or a coffee.

What's Inside

National Managers' Update

National Managers' Update ...Pg2-5

Marcel van Westbrook celebrates 50 years in forestry ...Pg2

Export

Chinese Market Evolution ...Pg6

Chinese Market Visit ...Pg7

Competition

Winner Of Best Article In November 2023 Newsletter ...Pg7

Forestry

Forestry Contractors Continue Their Tree Faller Certification ...Pg8

Farewell Grimmer Logging ...Pg8

Protection Forestry Fire ...Pg9

People

Forestry Touch Rugby Tournament ...Pg10

Customer Visit To Northland's Ngunguru Forest ...Pg10

Harvest

KPY Drone Month-End Stocktake ...Pg11

Automatic Forestry Quick Coupler ...Pg11

Roundwood Mill Visit Tokoroa ...Pg12

People

Love Grace Handbag Appeal 2024 ...Pg12

March Board Meetings and MFM (NZ) Company Dinner ...Pg13

Health and Safety

Gang 04 Recognising 17 Years LTI Free ...Pg14

WorkSafe Assessment Visits With The Fast Group ...Pg15

Rearsense KIGIS warning system ...Pg16

People

Tokoroa Wood Chopping Carnival ...Pg16

New Staff ...Pg17-19

National Managers' Update



Andrew Widdowson National Operations Manager

This year is moving along at a rapid pace and we have been blessed with a good run of weather since recommencing operations in January. Last year's sustained wet weather certainly presented some operational challenges to our business and also resulted in a significant

increase in dothistroma infection in our clients' forests. Since November 2023 our forestry team has been putting in long hours, including weekends, to treat infected areas across all our operating regions. We achieved a new record of 51,130 hectares successfully sprayed which is a credit to our forestry team and aerial suppliers. Well done!

Our planning and engineering teams continue to deliver a high level of service to our harvesting operations. Our current forward position is 9.6 million tonnes harvest planned, and 3.3 million tonnes harvest ready. Having a solid forward position is key to a robust, efficient harvest and transport supply chain.

Our harvest team manages the second largest harvesting operation in New Zealand by tonnes – just over four million tonnes, equivalent to 17,400 tonnes every day. February this year saw the completion of windthrow salvage operations without any health and safety incidents in Waikawa, Northern and OTPP central North Island forests. Of special note is the

completion of a three-year windthrow salvage programme in OTPP Wainui Forest involving the recovery of 669,565 tonnes from 1,489 hectares without a single health and safety incident. Another exciting development is the introduction of T-Winch tethered felling into ground-based operations in Tiaki. This technology enables the mechanical felling of short steep slopes that are common in Tarawera and Matahina Forest, lessening the need for manual felling.

Our distribution team manages the distribution of 600 loads each day to multiple customer sites within Northland, Eastern Bay of Plenty and central North Island regions. In partnership with our log transport suppliers, we have achieved a significant reduction in driver distraction events and a big improvement in seatbelt compliance. This result has gained national recognition within the commercial transport sector. Our distribution team has also been working with KiwiRail to initiate the rollout of new 60-foot purpose-built log wagons into the Kawerau-based KPY operation which has enabled a 30% increase in individual wagon payload. KiwiRail will be phasing in their new 60-foot log wagons into the Kinleith export yard.

In closing, I acknowledge the dedication and professionalism of Laresia Heke, Darrell Tahere, Mike Baker and Geoff Gover. Also their operational teams and our committed and professional contractors who perform to a high level every day. It is a privilege to work with such a large group of talented people.

**Stay safe,
Andrew Widdowson.**



Marcel van Westbrook 50 Years in the Forest Industry

By Andrew Widdowson

New Zealand in 1974 was a very different country than it is today. That is when Marcel started his career in forestry.

- New Zealand was a country of just 3 million people
- Norman Kirk was New Zealand Prime Minister
- A number 8 from Wellington by the name of Andy Leslie was the All Black captain
- The largest forestry employer in New Zealand was the NZ Forest Service.

Marcel was one of the initial forestry workers in the mid-1970s engaged in transforming the Tarawera Valley to the forest

that exists today. His dedication and pride in always doing a professional job and a willingness to share his knowledge led naturally to his appointment in the early 1980s as a logging trainer for Tasman Forestry. Marcel was also an early member of a team of LFITB logging and forestry trainers who pioneered the development and rollout of logging skills modules well before NZQA came into being.

He was invaluable when we woke up to the aftermath of Cyclone Bola in 1998 which destroyed a total of 27,000 hectares in the Central North Island. To put this in context, that is equivalent to five Lake Taupo windthrow events from Cyclone Gabrielle last year and at a time when there was very little mechanisation.

In 1992 Marcel teamed up with a health and safety consultant from the Taranaki oil industry to develop operational forestry auditing tools. That was leading edge in its day and remains the audit tool framework we use today in our Manulife Forest Management business.

In 2014 Marcel played a pivotal role in implementing MFM (NZ's) Tree Faller and Certification Programme which has stood the test of time and is looked upon by industry as the gold standard.

Fifty years in forestry is an incredible achievement. Marcel is well-regarded as a trusted and experienced professional who as they say, knows the bush. He has seen and contributed much and always has time for the people on the ground floor. His dedication and professionalism has made a significant contribution to our business and to our contracted workforce.

Congratulations and thank you on a remarkable 50 years in forestry!



Geoff Gover

National Harvest Planning & Engineering Manager

I read back on previous editions of the Manulife Forest Times regarding the continual wet weather and the impact this is having on construction and forest road maintenance. Thankfully the last

six months have been exceptionally kind to us with plenty of sunshine and wind, drying the earth. The net result is we have had a great construction season that has led to a positive forward constructed position going into the wet winter months. A huge thank you to all contractors who have toiled over the dry summer months to ensure we have significant forward harvest volume ready.

Another recent positive outcome is the number of contractors who have achieved more than a decade without a lost time injury. Excuse the pun but these results don't happen by accident. Good process/procedures and more importantly, great communication, are all factors behind these outstanding results. Well done to all involved. These results are one of the most positive aspects of my role as we continue to ensure

everybody goes home safe and happy after a hard day's work. I personally know the results of a forest-related accident, and the direct impact this has upon the family as well as the recipient. Over the coming months the team will look to celebrate these milestones with all those involved. Please all continue this commitment to both physical and mental safety.

A number of you reading this will have met the new Central Region Engineering Manager. We have been lucky to secure Jacques Pienaar who comes to the forest business from the civil construction sector. Jacques has a strong background in both loose aggregate and sealed surface pavements, but prior to joining MFM (NZ) had no exposure to forestry. To date he has taken to the role like a duck to water. If you see Jacques out and about, please take the time and introduce yourself. Although he is originally from South Africa, I have it on good authority that he is considering supporting the All Blacks. Please support Jacques as he finds his feet which I suspect won't take long.

Lastly as always, look out for your mates (both physically and mentally). They are the ones that make coming to work enjoyable.

**Stay safe out there,
Geoff.**



Mike Baker

National Forestry Manager

Tēnā koutou. As we move into the cooler months, we can look back at the largest dothistroma spray programme ever completed for MFM (NZ) with over 50,000 hectares treated. I would like to thank all our aerial contractors and their crews for their

efforts in getting this programme completed. The programme was significant due to the very wet summer experienced in 2022/23. Fortunately, it is predicted that the programme for later this year will be smaller, due to the moderate weather conditions experienced over this recent summer.

The summer conditions also meant that the fire season has fortunately been relatively benign to date (at least compared to what was forecast). Thanks to the contractors and staff who were still involved in training, standby and/or responses to any incidents over the season.

As we prepare the land for planting this season, I would also like to make special mention of our contractors and their staff involved in mechanical land preparation. Each day we can have up to seven excavators operating in our forests carrying out line-raking to move slash to improve access for planting and spot mounding to cultivate compacted soils and/or to lift trees out of the frost zone. Ultimately this improves the survival and vigour of the trees. Therefore, without these operations, the quality of our forest establishment and subsequent tree growth would be compromised.

Finally, in regards to the MFM (NZ) forestry team, since the last newsletter there has been two new additions, with Glen Kirk-Bega joining the central team in Tokoroa, while Andrea Batchelor has joined the eastern team in Rotorua. Nina Paton has also recently returned to her Senior Technical Forester role, based in Tokoroa, after being away for a year on maternity leave.

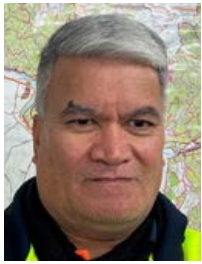
Noho ora mai.



Fire training at the forestry safe start in Tokoroa.



Results of line raking operations to improve planting in Northern region



Darrell Tahere

National Harvesting Manager

It was a great start to the New Year with a full harvesting turnout for Safe Start events in Tokoroa and Kawerau. This was supported by the senior management team (Chris Barnes, Andrew Widdowson and Glen Coleman) who were either

involved in the conversations or behind the counter serving food.

In other significant milestones, March saw the last load of windthrow logs leave Wainui Forest. It has been 27 months since the first windthrow event and we have recovered circa 670,000 tonnes during this period. I want to acknowledge the outstanding team effort across the business to deal with this challenging event. An absolute highlight was there were no safety incidents during the recovery and this is a credit to our contractors and staff.

Also worth noting is the completion and full recovery of windthrow from Pouakani in Central and Patutahi in Northland.

As part of our mechanisation strategy, Chris Cater from our Rotorua office has worked through all crews in the Bay of Plenty and Whangārei areas. Spending time with operators, Chris

has been reviewing their computer set ups, mechanical head configuration and calibration processes. He is also working with STICKS developers and the Woodflows team to streamline APT files and provide meaningful reports for end users. Chris will be visiting crews in Central soon.

Check out our other articles in this edition:

- We catch up with Jordan from Grimmer Logging Limited, as they complete their last harvesting area with us in Northland.
- Drones are a useful tool in the toolbox and have many applications. We are currently reviewing our drone policy and management requirements for use within our managed forest estates. An example is how we use drones to calculate inventory at the KPY.
- A successful field demonstration of the automatic forestry quick coupler with over 40 attendees ranging from contractors to forest management companies. Held at Loggabull 43 in Kinleith Forest, operator and crew foreman Ivan Quin put the machine through its paces – from felling, shovelling, processing, loading a truck and moving dirt with a bucket.
- A recent crew visit to local Tokoroa timber manufacturer Les O'Leary Limited - Roundwood Mill.

Ngā mihi.



Laresia Heke

National Distribution Manager

The distribution team have had an enjoyable start to 2024, with many initiatives continuing or commencing this year.

In this edition I will be sharing some photos and commentary around four different

themes with highlights as noted below:

- **Health, Safety and Wellbeing**
 - Distribution Safe Stop Driver BBQ
 - Taumata Plantations Limited Electronic Sign
- **Driver Recognition**
 - Annual Driver Awards (Fatigue and Distraction)
- **Culture and Teamwork**
 - Seatbelt Use
 - Distribution Contractor Vessel Boarding
- **Contractor Progress**
 - Sheldrake Haulage Limited



Safe Stop Driver BBQ at Weighing and Measuring Solutions Weighbridge Kinleith.

Distribution Safe Stop BBQ – Weighing and Measuring Solutions (WMS) Weighbridge Kinleith

The Manulife Forest Management (NZ) Limited distribution team and distribution contractors had an end of year safe stop BBQ on 13 December 2023. The morning involved providing BBQ food and coffee for drivers stopping in and included the option for a free confidential health check. The opportunity to engage with drivers and thank them for the work that they had done in delivering our clients' logs in 2023 was enjoyed by all.



Taumata Plantations Limited electronic sign and speed radar

Taumata Plantations Limited Electronic Sign

The Taumata Plantations Limited electronic trailer sign and speed radar was received by MFM (NZ) in February 2024. This will be valuable in displaying safety messages throughout the estate and for monitoring and recording speeds (with follow-up where required targeting safer driving conditions for all road users).



Annual Driver Awards (Fatigue and Distraction)

Log truck drivers have been recognised with MFM (NZ) Safety Awards throughout 2023. This was for their focus on safe driving when they have had no fatigue or distraction events (as recorded by the Guardian AutoSense camera system) while consistently working in MFM (NZ) managed forests for a full month. Throughout the year any driver who had received a safety award gained an entry into the draw for one of four \$250 grocery vouchers. The more awards received throughout the year, the more entries received. In December at the distribution safe stop BBQ, Chris Barnes (MFM (NZ) General Manager) conducted the draw. The four lucky drivers that received this extra bonus recognition prior to Christmas were:

- Keith Stoddard (Rotorua Forest Haulage Limited)
- Andre Robinson (Rob Dahm Limited)
- Lance Stubbs (Mike Lambert Limited)
- Wayne Hossack (Gilmour Transport Limited)



Annual Driver Safety Award Draw (Fatigue and Distraction). From left Laresia Heke MFM (NZ) National Distribution Manager, Chris Barnes MFM (NZ) General Manager, Kim O'Leary MFM (NZ) Distribution Forester.

Seatbelt Use

I wanted to take this opportunity to thank log truck drivers, distribution contractors, the Log Transport Safety Council (LTSC), Transporting New Zealand and MFM (NZ) staff for their focus on seatbelt use.

Monitoring, education, technology, and the discussion that has occurred in many forums has raised awareness of the importance of wearing a seatbelt. Log truck driver seatbelt compliance (through the observations that can be made) has improved from 52% a year ago, when the challenge was put in front of the team, to an average of 98% in 2024 (year to date).

This positive trend is significant and can be credited to all those involved in the work to change the culture around seatbelt use. When we started to focus on this important matter my thoughts were that if we could even change just one person's decision to wear a seatbelt every time they drive, then that would be worth it. We now have many weeks at 100% compliance and ask that everyone continues to strive for this target.

So well done and thank you for owning it, doing the right thing, and for protecting yourselves and others from harm.

Distribution Contractor Vessel Boarding

In 2023 the distribution team put in place a quarterly MFM (NZ) port user group meeting. The purpose of this forum

was for contractors involved in the export supply chain to get together to work on supply chain efficiency (working together to improve the 'smoothness' of the supply chain). At the February 2024 meeting, C3 presented to the group on the processes that they undertake from when a log truck is unloaded at Port of Tauranga until the logs are stowed on a vessel ready to sail. As a follow on, AVA offered the chance for MFM (NZ) distribution contractors to board a vessel to view these processes. Our special thanks to Peter Yardley (AVA Senior Export Manager, Operations) for facilitating and organising this experience.

The vessel boarded on 19 March was the Lignum Nexus which was built in the Shikoku Shipyard, Takamatsu Port, Japan. The vessel left port on 26 February, stopping briefly to fuel in South Korea before heading to Tauranga to load its first cargo – AVA logs. The vessel was loading cargo for two Chinese customers and six South Korean customers. The vessel had a deadweight tonnage (DWT) of 42,500t, which is large for a handy-size class vessel. Historically, vessels in this class would have averaged approximately 34,000t. There were 22 crew in total that operated the vessel and it was the third time the Master had sailed a new build in his 28 year career (this being his first visit to New Zealand).



Distribution contractor vessel visit – Lignum Nexus

Sheldrake Haulage Limited

Sheldrake Haulage Limited (SHL) recently opened their new office and workshop in Tokoroa. The Sheldrake family have a long and successful history in heavy transport and are currently a valued log cartage contractor to Taumata Plantations Limited. With the sale of the business late in 2019 from Graham Sheldrake to his son, Mathew, the business formerly known as G.J Sheldrake Limited is now Sheldrake Haulage Limited.

For over 43 years SHL has been involved in log haulage in the Central North Island, initially as a contractor to NZ Forest Products Limited. SHL has continued to grow and expand; in the year 2000 it diversified into the transportation of pulp and paper products for Carter Holt Harvey Pulp & Paper and general freight to destinations New Zealand-wide. More recently, SHL has worked for several different forest owners around the Central North Island. Currently SHL owns and

operates a modern fleet of 19 truck and trailer units, with 16 of them being logging trucks and three curtain siders.

The company is very proactive in the New Zealand transport industry and sees itself as a leader with many new initiatives and improvements within the industry.

All the best for the second quarter of 2024.
Noho ora mai,

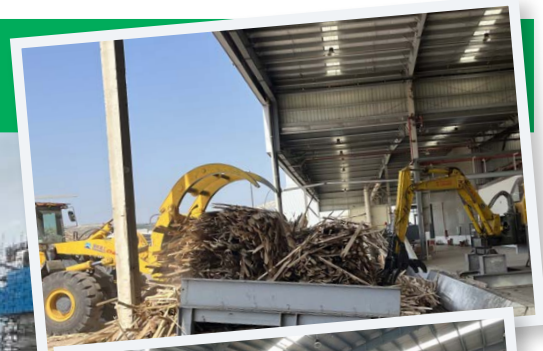


Sheldrake Haulage Limited – new office and workshop opening February 2024

Export



Traditional usage of New Zealand lumber, as concrete formwork



Chinese Market Evolution

By Lance MacLennan - Sales & Marketing Manager, Tauranga

During the recent AVA Timber Board's market visit to China, board members were able to witness first-hand the evolution of the Chinese log market. From one previously dominated by urban construction and infrastructure development, to one more focused on high quality finished products and value-added log usage.

AVA Timber and MFM (NZ) clients have been supportive of this change, building relationships in China with end users and manufactures who are producing products such as furniture, prefabricated housing and panel products. Many of these facilities are world-class and heavily automated, larger than the majority of New Zealand sites we are familiar with.

Our consistent presence in the market and reliability of our supply chain position us well for this continued evolution.



Competition

Winner of Best Article In November 2023 Newsletter

By Helen Moffatt -
Administrative Coordinator,
Tauranga

*Congratulations to Ian
Waterhouse for his article
"Kiwi Hunt".*

We really enjoyed the lengths he went to and the adventure he went on to find that kiwi. Who doesn't love a story about our national bird? Plus what a fabulous way to showcase our beautiful natural foliage.



Remember anybody
is eligible to win and
another \$50 gift voucher
will be awarded to the
person who contributes
our favourite article from
this edition. If you have
a favourite,
please email Helen:
hmoftatt1@manulife.com



The AVA Timber Board group and in-market Chinese agents welcomed to Xinhai Port.

Chinese Market Visit

By Lance MacLennan - Sales & Marketing Manager, Tauranga

In March the AVA Timber Board, including MFM (NZ) representative Directors Robert Green and Chris Barnes, visited the Chinese market.

The group visited numerous ports, construction sites, factories and sawmills over six days, showing support to AVA's Chinese customer base and deepening relationships. Both customers and board members had the opportunity to discuss a range of topics including log quality, delivery performance and future opportunities.

The visit was timely, with concerns around growing log inventory levels and a depressed construction market. AVA Timber (as a collective of forest owners/managers as opposed to a trader), is well-placed to provide customers with surety and confidence.



Above: One of three
log ports visited by
AVA Timber.

Left: One of many
customer dinners hosted
by the AVA Timber Board,
in a traditional Chinese
banquet setting

Forestry



Marcel van Westbrook presenting tree falling re-certification to Joel and Tyson Neumann-Niha

Forestry Contractors Continue Their Tree Faller Certification

By Peter Houston - Silviculture Manager, Whangārei

Joel (Principal Niha Contracting Ltd) and Tyson Niha-Neumann have continued their tree felling certification while primarily operating a thin to waste contract for Taumata Plantations (as certified thin to waste operators).

Joel's business plan is to develop professional tree fallers from thinning to waste operations and contract manual felling large

trees for harvesting contractors. Mechanisation has seen a reduction in manual tree fallers, but the industry needs to provide career progression for this specialised position because about 10% of mature trees are unable to be mechanically felled.

Marcel van Westbrook (a 50-year forest industry veteran and Manulife's Health and Safety Coordinator) imparted some wisdom while presenting Joel and Tyson their certificates at Opakani Forest (Northern Region) in February 2024.



Grimmer logging crew 704 at a farewell lunch in Pipiwai Forest

Farewell Grimmer Logging

By Peter Auge - Harvesting Manager, Rotorua

With the reduced annual cut in Northland, the number of crews has been decreasing. March 2024 saw the end of an era with Grimmer Logging completing their final harvest area in Pipiwai Forest, Northland.

Jordan Grimmer started working in the industry back in the 1970s as a young fella in forestry and has had a long association with the area. Having worked for NZFP and CHH Forests, Jordan and his son, Mark, have had two crews in the Manulife fold for several years carrying out both ground-based and hauler operations.



Matakana Island AOS Fire Crew.

Protection Forestry Fire

By Jarron McInnes - Protection Forester Fire & Security, Rotorua

As I write this, rain has dampened down the forest fire risk across the Bay of Plenty and central forests, much to the relief of all.

We ran a series of fire training days at the Kawerau Fire Depot late last year which involved contractors, staff and key agencies like (FENZ) Kawerau Brigade and the Department of Conservation (Whakatane, Tauranga and Rotorua). The training taught the very basics of firefighting and use of basic equipment such as wajax pumps, waterway equipment and fire appliances along with basic classroom theory of fire behaviour and the fire environment. For many it was a good refresher, and for some it was new and exciting territory.

One team that embraced the training was the Ace of Spades Forestry (AOS) crew. Most had never been exposed to firefighting and all that is involved, and took to the learnings with eagerness and vigour. As the old saying goes, "if the individual is keen and wanting to learn, then the teachings are easy". Over a period of two months all crew members became proficient in the use of equipment and also the basics of fire behaviour i.e. "how it acts" in different fuel loads and environments. They also learnt the basics of the fire environment (fuel, topography and weather) and the effects each can have on fire.

On 23 December 2023, a request came through for a team to be deployed to Matakana Island as a fire had taken hold within Port Blakely's Forest. During a nine-day campaign, AOS deployed several teams to the island including the "new team" in which they embraced their learning and fought fire that displayed extreme "anger". Reports followed over the next few days from FENZ fire managers of the hard work AOS and the crews did on the island and how they exceeded expectations. These teams also worked over the whole Christmas break including New Year's Eve and New Year's Day.

The newly-trained crew demonstrated respect, humility, skill and knowledge and that has been acknowledged by their peers, FENZ personnel and industry representatives. They were also acknowledged by our General Manager Chris Barnes and National Operations Manager Andrew Widdowson at the Safe Crew start up in Kawerau earlier this year.

Steve Webb (Protection Manager) and I are extremely proud of this team and how far they have come in such a short time. There will be more fire training delivered this year to contractors and staff which will range from covering the basics to some advanced fire training.

Finally, thank you to all contractors who have been vigilant over the summer months – whether it be applying for a Hot Works Permit or staying on-site "that little bit longer" to make sure this great asset of ours is protected from fire.



Working on fire line construction.

People



MFM (NZ) team (L to R): Thornton Campbell, Tane Purcell, Cole Grace, George Fanning-Ihaka, Lana McNaul, Mike Baker, Jack Higby, Lucy Stulen, Lani Dawson and Dacian Pullen.

Forestry Touch Rugby Tournament

By Mike Baker - National Forestry Manager, Rotorua

On a beautifully fine evening on Friday 1 March, the MFM (NZ) Rotorua office participated in a local forestry touch rugby tournament. The tournament was a round-robin format, with teams also competing from Timberlands (Rotorua and KPP), Mahi Rakau, PF Olsen and Scion.

The MFM (NZ) team consisted of players with a range of experience – from not ever having played the game before, to having been quite a few years since they last played, or a younger few who had more recent experience.

The team only had a couple of brief practices beforehand but MFM (NZ) came a credible third place with two wins, two draws and one loss.

The final was ultimately played between Timberlands (Rotorua) and PF Olsen, with Timberlands coming out on top.

Thanks to Rongo Piua from Timberlands who organised this successful inaugural tournament. Rongo is already making plans to double the number of teams for next time.



All teams after the final game.



Left to right: Taka Aiji (Whangārei), Keiji Tomita (Australia), Rijan Veldman (Whangārei), and Matt Matsubara (Japan)

Customer Visit To Northland's Ngunguru Forest

By Steve Weir - Supply Chain Manager, Whangārei

Recently we hosted a Taumata Plantations Limited customer at one of our harvesting operations in Northland. We visited crew #60 who are located in Ngunguru Forest, about 20km northeast of Whangārei.

Marusumi Whangārei Co Ltd (MWC) exports woodchip to Japan. The chip is produced from pulp log delivered to their chip plant south of Whangārei and then trucked to Marsden Point. Sawmill chip is also delivered directly to Marsden Point from the majority of Northland sawmills. The chip from the sawmills and pulp log is exported directly to Japan for use in paper manufacturing as well as alternate fuels for various manufacturing activities.

We hosted four staff from MWC (one from Japan, one from Australia and two from Whangārei), in the forest to show them how the pulp logs they purchase are produced. We also talked about our supply chain processes that get logs to them for processing and woodchip exporting.





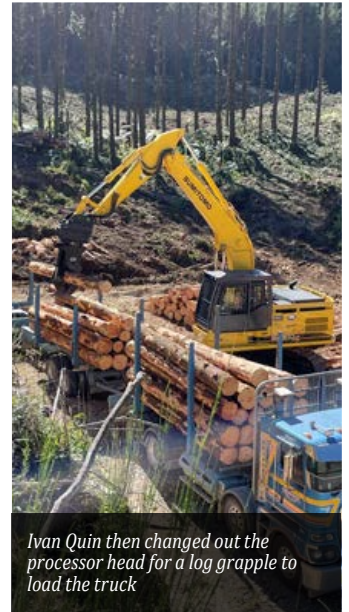
Harvest



Drones take off for inventory mission.



Ivan Quin processing stems into logs.



Ivan Quin then changed out the processor head for a log grapple to load the truck

KPY Drone Month-End Stocktake

By Peter Auge - Harvesting Manager, Rotorua

Due to ongoing problems with month-end stocktake reconciliation, and with the focus of 'Easier, Better, Faster', a trial was conducted with Interpine Innovation to test the feasibility of carrying out a drone stocktake through a process known as photogrammetry.

Photogrammetry is the art and science of extracting 3D information from photographs. The process involves taking overlapping photographs of an object, structure, or space and converting them into 3D digital models.

A packing factor is determined for each log grade to account for the air gaps between logs within a stack. The drone survey takes less than 20 minutes, meaning operations don't need to stop early to allow staff time to complete their stocktake.

We are excited with the results to date.



Manulife KPYP Stocktake - 31 Jan 2024
Image Date and Time: 31 Jan 17:00:07
Image By: Interpine Group Ltd

Each wood stack has a name, grade, and volume.

Automatic Forestry Quick Coupler

By Keith Raymond - Harvesting Programme Leader, FGR, Rotorua

An automatic quick coupler allows a base forestry machine to rapidly change from one implement to another – for example, from a processor head to a log-loading grapple – with the operator able to make the change-over safely from within the cab.

The Steelwrist SQ80 quick coupler on a Sumitomo SH300 base machine is an exciting new development for New Zealand harvesting operations. It is the first time a coupler has been installed with a large grapple processor and other heavy-duty logging attachments.

As well as saving time, the quick coupler means one machine can multi-task on the forest landing, reducing the number of machines needed. In small-scale operations this could be from two machines to one, halving the machinery and labour costs for the contractor. Having fewer machines means less congestion, improved safety and smaller space requirements for the machine working zone. This means a smaller landing area is required.

A successful field demonstration was recently held at Loggabull 43 in Kinleith Forest with over 40 attendees ranging from contractors to forest management companies. Operator and crew foreman Ivan Quin put the machine through its paces – from felling, shovelling, processing, loading a truck and moving dirt with a bucket.



Visitors and prospective buyers watch on with interest.



Crew 58 and Trevor Wilson viewing the operations in Tokoroa.



Trevor, the Health & Safety and Operation Manager, showed us the process of receiving our logs, processing them and the many products they can be cut into.

The crew has been cutting logs for this customer for the past month and Trevor has been very happy with the product they have received.

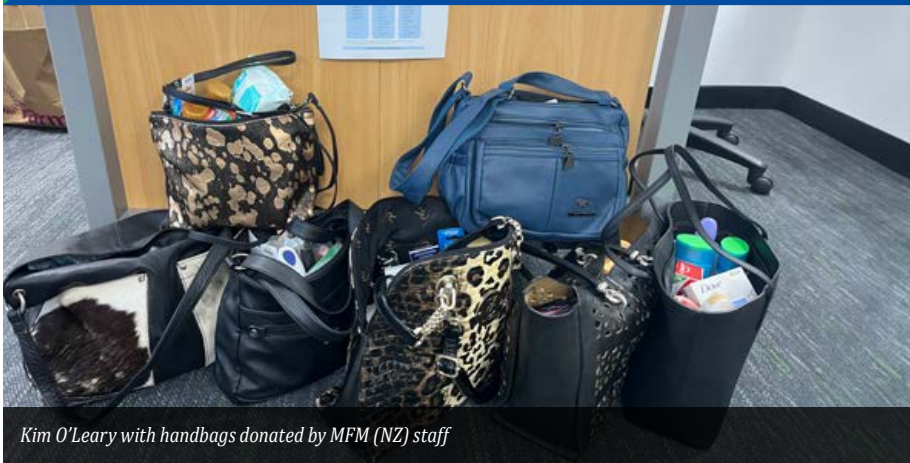
The crew found it very informative and could see how defects at the forest end could impact on the end product.

Roundwood Mill Visit Tokoroa

By Shiree Marshall - Harvesting Forester, Tokoroa

On Friday 23 February, Crew 58 and myself attended a mill visit at Les O'Leary/Roundwood New Zealand in Tokoroa.

People



Kim O'Leary with handbags donated by MFM (NZ) staff



Love Grace Handbag Appeal 2024

By Kim O'Leary - Distribution Forester, Tokoroa

Love Grace is an international appeal in the name of Grace Millane who was tragically killed by a man she met on a dating app while travelling through New Zealand (NZ).

Love Grace was established in the United Kingdom where Grace was from, and is a charity designed to help victims of domestic violence. Grace loved a handbag so in her name, Love Grace collects handbags and fills them with useful items for women in need. The appeals have now been run in several countries across the world including NZ, USA, Canada, Singapore and Australia.

The New Zealand Love Grace Handbag Appeal has been coordinated by Bank of New Zealand for the past four years.

However, in 2024 the appeal was run by a group of NZ women. These women put their hand up to coordinate the appeal in their area of the country and got local businesses on board as drop off locations. There were 38 coordinators and 66 drop off locations and the aim was to exceed donations in previous years of 1000 handbags.

Across NZ, 5269 filled handbags were donated during the 2024 appeal that ran from 14 February to 8 March. MFM (NZ) staff were encouraged to "share their humanity" and donate a handbag or essential items to fill the bags. Toni Punton, Health and Safety Manager of Williams and Wilshier (Distribution Contractor for TPL Central, OTTP NZ and Tiaki), also encouraged her colleagues to do the same. Between us we filled 16 bags to the brim with essential items and donated them to the appeal. These will be distributed via Women's Refuge. That is an awesome result.

Thank you to everyone who contributed. It only takes a little effort to make a big difference!



Eduardo Hernández enjoys a logging truck experience with Neil Holloway, driver for Williams & Wilshier.



Directors' visit to TPL, Tarawera Falls

Left to Right: Tom Sarno (Director), Nikki Davies-Colley (Chair/Director), Dr Nick Ping (Director), Kim O'leary (Distribution Forester), Angeleen Jenkins (Director), Peter Auge (Harvest Manager), Laresia Heke (Distribution Manager), Carolyn Jackson (Land Manager), Stephen Baldwin (Director), Simon Papps (Resource Manager) and Gordon Anderson-Smith (Harvesting Forester)

March Board Meetings and MFM (NZ) Company Dinner

By Helen Moffatt - Administrative Coordinator, Tauranga

In March we had the pleasure of hosting Taumata Plantations Limited (TPL), Tiaki Plantations Company (TPC) and MFM (NZ) Directors in Tauranga for a series of board meetings

This time for the Directors' tours, we decided to change things up a bit. MFM (NZ) staff members coordinated a number of field tour options for the Directors including truck and train rides as well as visits to sites. They all went off in different directions and by all accounts these tours were successful and even the weather played ball for us.

Following on from the board tours, MFM (NZ) staff attended a company meeting where the MIMTA Senior Leadership Team updated us all and answered a few questions from the floor.

This year at our annual company dinner we welcomed the TPL and TPC Directors. This was a fantastic opportunity for both staff and Directors to mix and mingle and get to know each other a bit better. Personally I got lots of comments from our finance team about how nice it was to meet the person behind the name.

An annual tradition is to take this opportunity for all new staff to introduce themselves to the wider team. This always causes a bit of stir as not everyone feels comfortable standing up in front of a big group of people and talking about themselves. I have to say

I was very impressed with the public speaking capabilities of the 13 staff. Good job guys.

We also had a very special presentation this year. Andrew Widdowson (National Operations Manager) presented Marcel van Westbrook (Health and Safety Coordinator) with a recognition award for "50 Years Service in Forestry". What an achievement and a well-deserved award this was. Congratulations once again Marcel.



New staff left to right: Lana McNaull, Dacian Pullen, Jacques Pienaar, Cole Grace, Charlie Hosking, Amanda Pullen, Shane Learmond, Glen Kirk, George Fanning-Ihaka, Jo Burrell (HR Manager), Rona Wheeldon, Lani Dawson, Jarron McInnes, Tony Amouta, Karl Boobyer and Chris Barnes (General Manager)



Left: Marcel van Westbrook receiving his award.

Right: Chris Barnes, Marcel van Westbrook and Andrew Widdowson



Health and Safety



Gang 04 Recognising 17 Years LTI Free

By Rona Wheldon - Health & Safety Systems Manager

Paul and Megan Olsen have been contracting in the Central North Island for the last 38 years. Olsen 221 is their original crew which started as a small production thinning operation working for NZFP in Kinleith Forest. When Cyclone Bola struck, an opportunity presented itself for the business to diversify and move into clear fell. As part of the Bola clean-up in the forest, the crew received a new number and Gang 04 was born.

Last year saw a changing of the guard at Gang 04 as Paul and Megan welcomed Scoota and Trish Pulman on board as partners, forming Pineridge Harvesting Ltd.

Gang 04 operates now as a fully mechanised ground-based operation within Kinleith Forest. The team comprises a healthy mix of youth and some very experienced old-school Tokoroa bushmen. In June 2023 the team completed 17 years Lost Time Injury (LTI) free – a remarkable achievement in this fast-paced and dynamic industry.

The crew's safety journey has been no different to any other. There has always been a want for zero harm and to be successful, but the challenge lay in bringing all the key facets together. As they started to understand what was needed to link strategy to implementation, a framework was developed with some mentorship that aligned people and processes to the company goals and strategies.

There has always been an unwavering passion, commitment and dedication to providing a safe work environment. Providing clear

expectations of the team has created a shared understanding which helps everyone work towards the common goal.

Paul and Scoota have always demonstrated that safety is their number one priority. Actions like resourcing the operation well, providing a strong framework to support the operation, and empowering team members to effectively stand in the gap has meant they have been able to create an environment conducive to success.

Gang 04 has a strong culture. One of the biggest values they demonstrate daily is 'manaakitanga'. They treat each other and any other person who comes to their site with respect, humility, kindness and honesty.

In an era where people are sitting in air-conditioned machinery, and it has become common practice to eat lunch on your own, Gang 04 make it a priority that all team members come to the smoko hut to sit and eat lunch together. They take turns to bring kai to share, and by sitting with one another, it has helped the team build a strong rapport. They have been able to celebrate success and provide support to each other in times of need. Through all this though, they are unconsciously strengthening the foundation of their team.

They are very proud that the consequence of everyone's efforts is 17 years Lost Time Injury free, and it is a clear goal to continue doing the things that work.

Congratulations Gang 04, the safety journey does not have to be a difficult one. What we do on that safety journey is what makes the difference, and it is up to us to decide what difference we want to make.



WorkSafe Assessment Visits With The Fast Group

By Graeme Bengé - Fast Harvesting

Recently the Fast Group hosted Andre Pieterse (WorkSafe Senior Inspector) at all seven crews within the company. I would like to acknowledge our own Health and Safety Co-Ordinator, Min, for taking the time to escort Andre around our crews, especially considering they are currently spread from the Kinleith Estate into the King Country and Turangi.

The purpose of Andre's visits was to assess the general health and safety within the crews and to also engage the machine operators around how they manage their workload and any potential risk of fatigue from working long hours. He was very pleased to see there is a positive culture amongst all the crews and that there are systems in place, especially for the loader operators who start early to load out. These operators leave earlier in the afternoon so they have a good break before returning to work for their next shift.

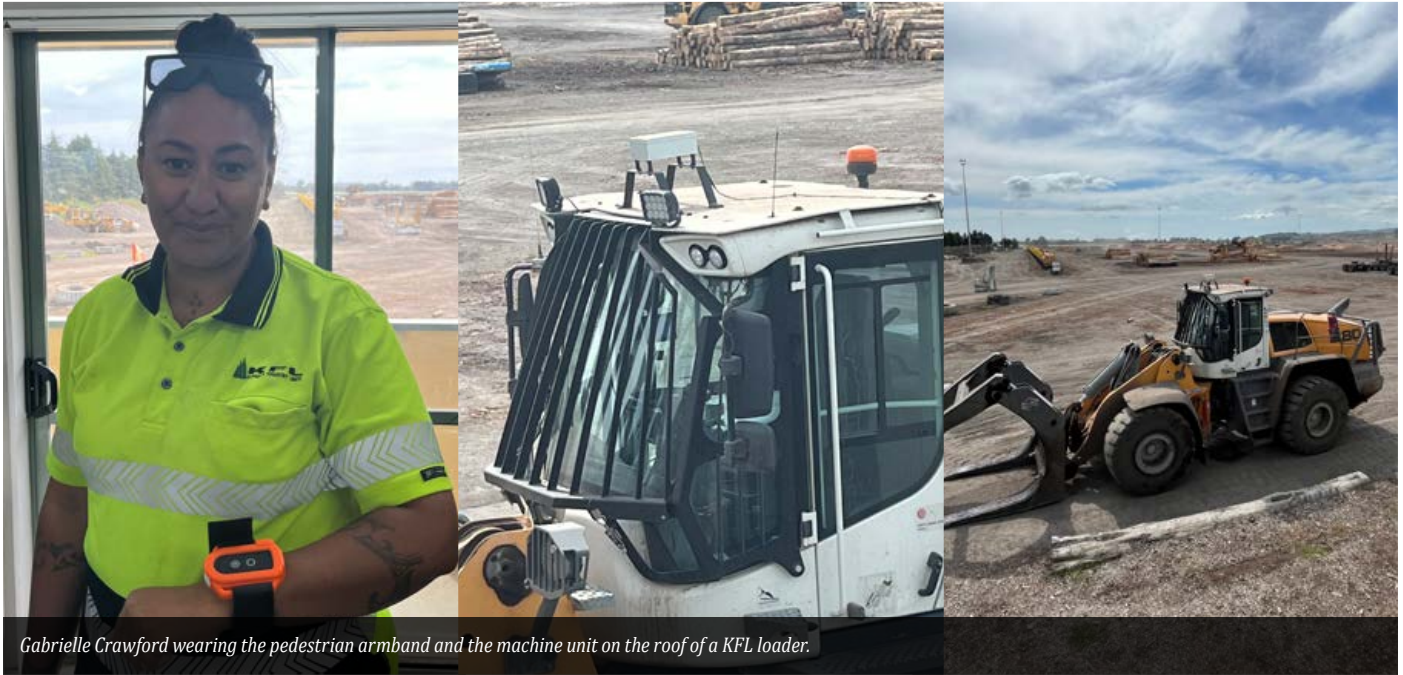
He was impressed to see the proactive approach that all members of the Fast Group take towards health and safety. In particular, the systems in place to ensure the provision and maintenance of worker wellbeing and a safe working environment, and that everyone looks out for each other.

All staff that Andre engaged with on a personal level enjoyed talking with him and all took something away from his visit.

Andre said they currently have inspectors undertaking the WorkSafe Forestry Capability Programme. They will be out in the field with Andre in the coming months to gain experience and become proficient in doing assessments in the forestry sector.

Thank you to all crew members for welcoming Andre to your work sites and engaging with him in a professional manner. This is what makes forestry a great industry to be part of.





Gabrielle Crawford wearing the pedestrian armband and the machine unit on the roof of a KFL loader.

Rearsense KIGIS warning system

By Jacob Kajavala - Kajavala Forestry Limited, Kawerau Processing Yard and Kim O'Leary - Distribution Forester, Tokoroa

During a staff safety meeting around 12 months ago, the team at Kajavala Forestry Limited (KFL) were discussing risks in their operation. One team member raised the risk between machine and man interaction that occurs in the yard operations.

They suggested that while there were controls in place that worked well, there might be something better out there. After some investigation, contact was made with a supplier of a sensor warning system called Rearsense. The technology works using radio frequency and does not require line of sight, so is technically designed to work in a log yard environment when log stacks may be in between machines and ground staff.

A trial of the units was arranged by KFL. It involved mounting one vehicle tag and indicator system to the top of a loader cab roof, and one pedestrian tag with an armband which was worn

by a staff member on the ground. There are two distances that can be set in the system with different levels of alarm. KFL have set a 14m warning alarm and a 6m intense warning alarm. Both the machine and pedestrian have their own alarms. The system works for machine versus machine interaction as well.

The trial ran for five months, during which time the units were found to work some of the time, but not all. Changes were made to improve the reliability of the system; it was found that other beacons and lights on the roof of the loader were interfering with the technology. Once this was remedied by raising the unit off the roof slightly, the system performed 100% of the time.

The system is now fully operational and has been implemented across the KFL yard operation in Kawerau. This has added an extra layer of protection to the team operating in the yard. A highlight of this process was the fact this was an idea from one of the team. A great idea to help your workmates get home safe every day.

People

Tokoroa Wood Chopping Carnival

By Scott McCabe - Distribution Forester, Tokoroa (on behalf of Bruce Nairn, QSM)

On the weekend of 3 and 4 February this year, the Tokoroa Axemen's Club held its 71st two-day Wood Chopping Carnival at the Tokoroa Memorial Sports Ground. We were able to attract all the top axemen from across the North Island. Overall we had 38 axemen and axewomen attend.



Shane Campbell



Jack Jordan



The Tokoroa Carnival is one of the top three carnivals held in New Zealand each year. The opportunity for axemen to compete with Radiata Pine logs is very limited in New Zealand.

The exceptional support our club receives from Manulife Forest Management (NZ) Limited allows us to make this happen. We are also supported by local logging contractors, haulage contractors and other companies that are associated with the forest industry. A couple of our current sponsors have been with us for over 50 years.

The winner of the points trophy for overall top axemen was won by a local axemen Shane Campbell. Shane has won this trophy twice previously. This trophy was sponsored by the Timberworkers Union in 1991 and has been competed for each year since then.

The top individual event of the two days is the Dave Lamberton Memorial Standing Championship. This year Jack Jordan won it for the second time. His brother, Shane, has won it once and local lad Cleveland Cherry won it 2021, the first year the trophy was presented.

Dave was a local axemen who worked in the forest industry for over 40 years. He was a member of the New Zealand Axemen's

Team for over 20 years, captaining the side for half that time. Dave was such a good axemen that he competed for a number of years in many places around the world which included meeting members of the Royal Family on a number of occasions.

Jack Jordan and Cleveland will represent New Zealand at the Timbersports World Championship later this year. Both are previous winners of the open event (Shane) and the under 21 championship (Cleveland).

The jigger event is gaining support again from axemen after many years of only a handful of competitors competing. The number of ladies competing is also increasing and they compete in the sawing and underhand events.

The annual carnival has been held at the Tokoroa Memorial Sports Ground for 71 years. We are fortunate that early members developed our arena; we are one of a few clubs that has a dedicated area for chopping as well as having storage facilities available to store the logs. The club starts preparing logs five to six months out from our carnival. First logs are selected, cut to length, peeled to the correct sizes and then wrapped to protect them from drying out. These logs are good for 12 to 18 months when stored correctly.

People - New Staff

Cole Grace

Resource Forester, Rotorua Office

Thank you all for the warm welcome to Manulife.

My upbringing has primarily been situated around the Central North Island, Hawke's Bay, and Gisborne regions, with a brief three-year stint in Wales during my younger years. I have been fortunate enough to experience some amazing things such as skiing in France and Switzerland, playing football in China and travelling across the USA for three weeks with my family.

Like many in their final year of high school, I was unsure of what I wanted to do and which career pathway I wished to embark on. But I knew it had to align with my love for the outdoors. While fishing a backcountry river in Gisborne, I crossed paths with a forest manager for Hikurangi Forest Farms, now Aratu Forests Limited. I was fascinated by the opportunities work provided him with to explore the outdoors in his spare time, while allowing him ample time outdoors in his day-to-day job. Additionally, my dad was a logger in the 1980s and advised me that if I wanted to enter the forestry industry, I didn't want to be a man on the ground unless I wanted lifelong back problems (he is now a chiropractor). This prompted my decision to pursue forest management and I have never looked back.

I decided I would migrate to the South Island to complete a Bachelor of Forestry Science at the University of Canterbury. In search of financial assistance, I was fortunate enough to become a recipient of the Nga Karahipi Uru Rakau Scholarship offered by MPI. Exploring the South Island was something different, exciting and extremely enjoyable. However, the harsh winters got the better of me and at the conclusion of my studies I wanted to make a move back up north.

Outside of work, I find joy in a variety of outdoor pursuits such as hunting, fishing, tramping, golfing, mountain biking and skiing in the winter.

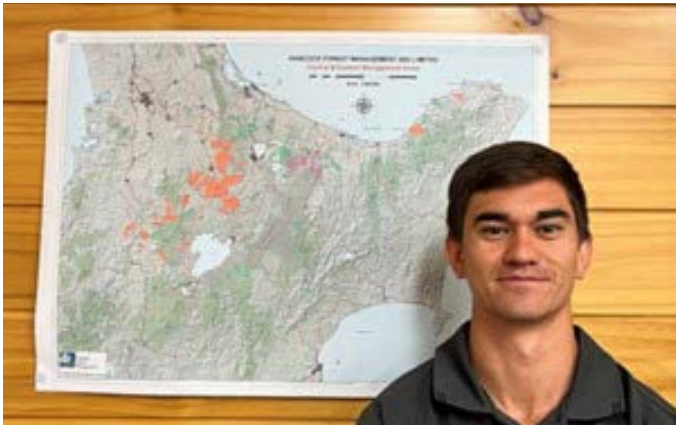
Tongariro Crossing a few weeks back.



I am thrilled to embark on my career in the forestry industry with Manulife, and I am eagerly anticipating a successful and fulfilling year ahead!



Neat brown trout near Ngongotaha stream mouth.



George Fanning-Ihaka

Forester, Rotorua Office

Kia ora! My name is George Fanning-Ihaka, and I have recently joined the forestry team in Rotorua.

I am originally from Dargaville in Northland and grew up on a farm. While I loved working outdoors, I did not enjoy dealing with cow dung or sitting on a quad in the pouring rain at early hours. Forestry being a significant employer in the area with excellent job opportunities, appealed to me as another way to work outdoors.

I attended the University of Canterbury to study a Bachelor of Forestry Science in 2019. In 2020, the COVID-19 pandemic occurred, and I decided to take a gap year from university online and worked for Douglas Logging Ltd as a QC on the skid following my second year. I returned to university in 2022 and completed my study in 2023.

During university holidays, I undertook work, including summer internships for the Ministry for Primary Industries in Gisborne,

Northland Forest Managers in Dargaville, and Parengarenga Incorporation in Te Kao. I also planted and pruned for Searles Forestry Ltd in the mid-semester breaks.

Outside of work I enjoy spending time with family and friends, playing rugby, and staying active with the gym and an occasional half marathon. New to the Rotorua area, I am hoping to get into mountain biking and hunting.

I graduated from the University of Canterbury at the beginning of November and started with Manulife at the end of November, so I am very new to the work life. However, I am very keen to learn and play my part in the Manulife NZ team. Everyone I have met so far has been welcoming, and I am looking forward to meeting the rest of the Manulife NZ team.



Melbourne trip.

Cape Brett walk.



Glen Kirk-Bega

Forester, Tokoroa office

Hi all, my name is Glen Kirk-Bega and I recently joined the Forestry Team in Tokoroa.

I have spent the last couple of years working for Tokoroa-based silviculture crew South Waikato Planting.

I am originally from Durban, South Africa, but spent most of my life in the beach town of Mtwalume on the south coast, surfing, diving, fishing and enjoying the warmth of the sun.

I have a background in electrical draughting as well as social media and online marketing.

My wife, Amanda, and I moved over to New Zealand five years ago. In April 2023 our small family grew with the birth of our son and first child, Brodie.

Outside of work, currently I enjoy road cycling, home renovations and spending time with the family.





Jacques Pienaar

Engineering Manager, Tokoroa Office

I am originally from South Africa and started my career working for consulting engineers mainly focusing on major road and bridge construction projects.

A highlight of my career is the construction of the Isando Pedestrian bridge which won the CESA Aon Engineering Excellence Award and Concrete Society of Southern Africa's Fulton Awards.

I'm married to a lovely wife and we have twin boys who are 16 years-old. In 2018

we decided to emigrate to New Zealand, where I started working in the asphalt and chip seal industry.

Most weekends you'll find me either training, judging or competing in gundog field trials. Other hobbies include hunting, fishing and anything outdoors.



Rona Wheeldon

Health & Safety Systems Manager, Tokoroa Office

Kia ora, I have joined the health and safety team as the new Health & Safety Systems Manager in Tokoroa.

I was born and raised in Tokoroa and grew up in and around Kinleith Forest. Prior to joining the MFM (NZ) team, I spent 25 years working for Paul and Megan Olsen providing support to all their harvesting operations that operate in and around the Central North Island. This was a role that evolved over time and provided many valuable learning opportunities. One of our greatest achievements was the incredible work we completed in safety culture and leadership. These are lessons that have provided me with great insight into understanding how to initiate and make lasting change.

My husband, Shannon, and I have two children, Mikayla (12) and Mana (9), and live on a small lifestyle block 15 minutes

out of Te Puke. At this stage in my life, you will normally find me either on the sidelines of our kids' many sporting ventures cheering or volunteering my time coaching/managing teams. I am also a member of our school Board of Trustees which provides not only new challenges but also an opportunity to view the world through a different lens.

When not at work we enjoy exploring our backyard and our location means the ocean or the forest are only a stone's throw from home. I also love hanging with family, sharing food and a few cold beverages and all the laughter that comes with it.

Thanks for welcoming me with open arms and I look forward to working alongside you all.



Contact Us

Manulife Investment Management
Forest Management (NZ) Limited
PO Box 13404
Unit B, 120 Hamilton Street, Tauranga 3141

Whangārei Office (09) 470 1300
Tokoroa Office (07) 885 0350
Rotorua Office (07) 350 0080
Tauranga Office (07) 571 7900



Manulife
Investment Management