

# Manulife *Forest Times*

Brought to you by Manulife Investment Management Forest Management (NZ) Limited

Issue No.16 | JULY 2024

## Thank you for your understanding and support

By Chris Barnes - General Manager

*Welcome to the second edition of Manulife Forest Times for 2024. Since our last edition, we had seven weeks at 80% production.*



I would like to thank staff and contractors for their understanding and support as we reduced production and navigated our way through poor market conditions and low demand from export customers. This reduction was necessary as daily consumption in China was very low and port stocks were starting to build. As we move back to full production, I am pleased to report that port offtake has increased (back to around 60-70K m<sup>3</sup>/day) and inventory levels in China have decreased to around 3.2m m<sup>3</sup> (down from 4.2m m<sup>3</sup> in March). While this is moving in the right direction, the market remains challenging for forest growers across New Zealand.

A common question during the reduced production period was "why 80% and why seven weeks?". This reduction and timeframe took into consideration a wide range of factors such as domestic obligations and demand, export customer commitments across China, Japan, India, Taiwan and Korea, shipping forecasts and contracts (vessels are often chartered a month in advance), forestry right commitments and supply chain contracts. We are also very mindful of the significant impact these decisions have on our clients and contractors. Given the shift in market dynamics, it feels like the future will involve regular movements from 'normal' production and we need to prepare our collective businesses for this flexibility.

In the March edition I mentioned AVA had scheduled a vessel for India and I am pleased to report that it successfully discharged to our customers in May. In positive signs for this market, a second vessel has also loaded in Napier/Northport and we hope to see a vessel a month to India throughout 2025.

Moving across to forestry, we are busy planting with over 4500ha to plant this winter. That is 3.6m trees and I would like to thank all forestry crews for carrying out one of the most important functions in the business.

We have had several new staff join us at MFM (NZ) since our last edition. I would like to welcome Marie Heaphy (Health, Safety & Wellbeing Coordinator), Sarah Fellingham (Accountant), Alex de Rosemont (Finance Assistant), Richard Stringfellow (Health & Safety Wellness Leader), Cameron Fenton (Forester) and Becs Charlie (Forester). Thank you for choosing to work with MFM (NZ) and for sharing your background with us all in this newsletter. As always, please take the time to welcome our new staff when you get the opportunity. I would also like to wish Nav and Kayla all the very best as they take maternity leave.

I would like to bring your attention to a new regular feature in Manulife Forest Times called Forest Chat. The back page of every edition will focus on mental health and wellbeing. The first article focuses on our Health & Safety Wellness Leader (Richard Stringfellow) and EAP Services. Please take the time to read about Richard's role and put his contact number in your phone.

Thank you to everyone that took the time to submit an article for this edition. The articles are all a nice reminder that we are very fortunate to be working in some of the best forests in the world, surrounded by remarkable people.

**Please feel free to give me a call (027 257 7260) anytime if you need anything, or would like to have a chat or a coffee.**

## What's Inside

### *National Managers' Update*

National Managers' Update ...Pg2-5

### *Export*

Korean Market Visit ...Pg6

### *Competition*

Winner Of Best Article In April 2024 Newsletter ...Pg6

### *Forestry*

Forestry Operational Highlights ...Pg7

Thinner Certification Continues ...Pg8

Kids Protecting The Forest ...Pg9

### *Harvest*

OTPP NZ Directors' Field Trip ...Pg10

Evans Logging Ltd... In Tarawera Forest ...Pg10

Visitors to Harvesting Operations ...Pg11

Cougar Park Harvesting ...Pg12

### *Woodflow*

Matching Log Products To Export Customer Demand ...Pg13

### *Health and Wellbeing*

Employee Assistance Programme (EAP) ...Pg13

### *Engineering*

King Country Update ...Pg14

### *People*

Recognising Excellence ...Pg16

New Staff ...Pg18-20

## Forest Chat - NEW

A supplementary newsletter ...Back Page

# National Managers' Update



## Andrew Widdowson

### National Operations Manager

We are now into what has been a mild winter so far and planting is in full swing across the business. This year our establishment programme amounts to 4500 hectares and just over half that area is located in our Taumata Central region.

At maturity, 4500 hectares of radiata pine plantation will have sequestered 2.2 million tonnes of carbon dioxide, provided annual employment for 30 logging crews, yielded 2.9 million tonnes of log product and provided enough timber to frame 50,000 typical New Zealand homes. Impressive, and a reminder of how important our forests are in managing climate change, providing employment, and building materials for our future housing demand.

Our construction season has wound down after a strong level of activity over summer and autumn thanks to settled weather. We have good forward position for our harvest operations with the engineering team monitoring and responding to road maintenance work as required.

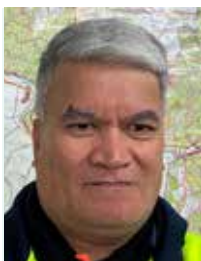
In response to weak demand for log exports, we took the decision to restrict harvest production to 80% of normal levels over May and part of June. We returned to normal harvest production levels following King's Birthday weekend. For an operation of our scale, the ability to reduce to 80% requires a high level of co-ordination, communication, and discipline across our log supply chain. Thank you to all staff and contractors for a well-planned and executed reduction strategy. There is some recent positivity from the log export market in response to reduced supply levels from the New Zealand forest industry as a whole,

which hopefully will mean a more settled second half of 2024.

Our distribution operations have been running smoothly with good service from our log yard operators and KiwiRail. Our Kawerau and Kinleith log yards are in quite good condition for this time of year as a result of good weather experienced over the last few months. Laresia and the team are working with our distribution contractors on some innovative technologies that will result in a step change in safety performance. Look out for more information in our next edition of Manulife Forest Times.

In closing, I would once again acknowledge the dedication and professionalism of Laresia Heke, Darrell Tahere, Mike Baker and Geoff Gover, their operational teams, and our committed and professional contractors who perform to a high level every day.

**Stay safe. Plant a tree.**



## Darrell Tahere

### National Harvesting Manager

Our operations continue to deliver to a high standard, with an increased focus on the East Coast and King County. As we transition into the winter season, the increase of Enviro Mates has been encouraging, reflecting the crew's

commitment to preserving their workplace. The Safe Mates initiative continues to gain momentum in OTPP NZ and Tiaki, a commendable achievement.

We recently concluded a Tiaki request for pricing (RFP) for work in Tarawera Forest. The RFP was open to all our current contractors, as well as those who had recently finished. The selection process was comprehensive. It involved an analysis of past and present performance, innovation and costs, culminating in a personal interview with Peter Auge, Glen Coleman and myself. At the end of the process, Evans Logging Limited was appointed and will start work in July 2024.

In the first week of July, our Central Harvesting Manager, Richard Feierabend, will be traveling to Korea via China. Accompanied by our Sales & Marketing Manager, Lance MacLennan, they will be meeting with customers to gather feedback on our performance and areas for improvement. Upon their return, they will share their findings with both staff and contractors. We wish Richard and Lance a safe journey and enjoyable culinary experiences.

Lastly, we extend our congratulations to TJ Thompson and Shane Learmond who completed 12 months of service for MFM (NZ) in May, and to Nathan Morshead who will reach this milestone in July.

**Ngā mihi.**





## Mike Baker

### National Forestry Manager

As usual at this time of year, we are in the midst of our annual planting programme. This includes the first full season for MFM (NZ) managing the establishment programme for the Waonui Forest Investments Ltd estate. Along with the planting required in Matahina, Wainui and Stanley forests, there has been significant mechanical land preparation operations. In particular, spot-rip mounding in Wainui Forest where there is a relatively large re-establishment programme due to the harvesting of the windthrow areas in this forest over the last couple of years.

Overall, this year, we have a planned planting programme for the MFM (NZ) managed estate that consists of planting 3.6 million trees across 4,500 hectares. This involves up to ten contractors and approximately over 50 planters working each day across the country, from Northland to the Central North Island and out to the Eastern Bay of Plenty. As with many of our operations in forestry, the planting programme requires good planning and coordination between MFM (NZ) staff, contractors and suppliers. This ensures a successful season and we thank everyone involved for their continuous hard work.

Regarding the MFM (NZ) forestry team, Cameron Fenton and Rebecca Charlie both joined the forestry team in Tokoroa at the end of June. Cameron has started in a full-time forester role, while Rebecca is back filling Kayla Corbett's position while Kayla is on maternity leave for the next 12 months from the start of July.

**Noho ora mai.**



*Ace of Spades Contracting Ltd commencing planting in Matahina Forest in the Waonui Forest Investments Ltd estate.*



*Land being prepared (e.g. line raking, spot mounding) for planting in Wainui Forest.*



## Geoff Gover

### National Harvest Planning & Engineering Manager

By the time you read this, we will be over halfway through the year and the shortest day is well past us all. A few more months and we will be back into summer and construction season. Now is the time to reflect on the positive achievements

made by the team over the previous six months.

Below is a table showing the position regarding what volume has been harvest planned and what is ready for a harvest crew to move onto tomorrow. All areas have at least nine months harvest ready. This doesn't happen by accident and involves a significant amount of backroom planning to ensure the correct areas are harvest planned and then constructed. A big shoutout to all the teams – Harvest Planning, Engineering and Harvesting that enable a strong harvest ready position.

I have spent some time in the bush recently looking

around operations in the King Country. The quality of both engineering and harvesting work is outstanding. A few weeks ago I spent some time with the Deputy Director General for Te Uru Rakau and Northland Regional Council staff looking at engineering and harvesting operations, and the impact of regional rules on operations. I advised them that I hadn't visited the site for months prior as I knew turning up, that everything would be in order – and it was. The point of this is that it doesn't matter where I go in our operations across New Zealand, the standard is high and level of outcome is outstanding. All the people who work in the forests can take credit for this, as it is all of you that ensures the standards are achieved.

Lastly as always, look out for your mates (both physically and mentally). They are the ones that make coming to work enjoyable. This applies to my direct teammates also.

**Stay safe out there.**

Property	Weekly		Annual		Current Position	
	Draft	Final	YTD	Full year Plan	Planned	Harvest Ready
Taumata Northern	5,632	37,042	221,420	461,704	402,636	209,512
Taumata Central	69,806	27,147	1,022,982	2,500,000	5,845,663	1,973,408
Tiaki	110,989	0	690,075	1,250,000	3,001,647	1,006,613
OTPP	15,078	0	44,342	419,568	653,988	258,145
Total	201,505	64,189	1,978,819	4,631,272	9,903,934	3,447,678



## Laresia Heke

### National Distribution Manager

The past couple of months have been challenging with the China market correction and subsequent reduction in production levels in recent times. The distribution team have worked closely with the harvesting and woodflow teams to ensure that confirmed domestic orders were met while taking supply out of the export supply chain. This was a difficult time for all contractors and their staff who were impacted by the slowdown, and we would like to extend a special thanks and recognition for the professional way you dealt with the situation. Driver and staff wellbeing was at the forefront of everyone's mind, and we are looking forward to what will hopefully be a more stable quarter ahead.

In this edition I will be sharing some photos and commentary around:

- Wood is Good programme recently held in three central location schools
- New Sequal Off-Highway Road
- Fatigue management tools currently being trialled
- Recognition of positive health and safety practices
- 4Ds as a different approach to engaging with staff for good health and safety outcomes.

### Wood is Good

The distribution team have been involved in co-ordinating the Wood is Good forestry and log transport programme at three central location schools in June. This programme has been run at Amisfield, Bishop Edward Gaines and Upper Atiamuri School and was attended by MFM (NZ) distribution, harvesting, and health and safety team members.



*Wood is Good at Upper Atiamuri School - children enjoying the truck provided by Aztec Forestry Transport Developments Limited*

This programme is a forestry and log transport programme funded by the Ministry for Primary Industries and the Forest Growers Levy Trust. Wood is Good aims to educate primary-aged children about the benefits of forestry to their community. The sessions involve watching a video with the children about staying safe around logging trucks, a classroom discussion about the full forest cycle from planting to harvest and delivery to customers, and the viewing of (and climbing into) a loaded logging truck.

Our thanks go out to Rob Dahm Limited, Gilmour Transport Limited and Aztec Forestry Transport Developments Limited

for supplying a truck to attend one of these events. Each of these companies not only supplied a truck and helpful driver, but also staff who could answer any truck-related management questions that came up. The team that visited each school all enjoyed engaging with the children to ensure they knew about blind spots, safe travelling distances and being seen around trucks.

Additional resources including books, wooden games, building blocks and a replica wooden logging truck were left for each school to continue to educate and entertain the children. You can watch the video that the children watched via this link: [www.youtube.com/watch?v=uiCC7IlxWDQ](https://www.youtube.com/watch?v=uiCC7IlxWDQ).

### Sequal Off-Highway

Sequal supply their customers with fast growth, dimensionally-cut NZ Radiata Pine lumber from sustainably harvested 100% FSC certified forests. Sequal specialise in custom-cutting wood to order, which means they can supply the sizes that their customers need to optimise their production. Being positioned on the doorstep of our Tiaki Estate makes Sequal an ideal customer for utility logs that would otherwise travel via the rail network to Port of Tauranga destined for the export market. Sequal has a long-term goal of increasing production and their new Off-Highway Road will help deliver logs to their site as efficiently as possible.

The Off-Highway Road dimensions and design were finalised by a team that included representatives from Sequal, Manulife Forest Management (NZ) Limited, Timberlands Limited, two main distribution contractors who cart logs into the site (Williams & Wilshier Transport Limited and Rotorua Forest Haulage Limited), along with the design engineer. They worked together to ensure the road was completed to a standard fit for use by the off-highway truck fleet. Trials took place, running an off-highway unit down the road to ensure the dimensions were suitable and signage placement was agreed. A traffic safety sheet was developed which drivers will be given before using the road. A special thank you to Jason Williams (Williams & Wilshier Transport Limited) and Kim O'Leary (MFM (NZ) Distribution Forester) for leading this great piece of teamwork with one of our valued customers.



*Sequal Off-Highway Road during the construction phase, and in use by an off-highway double unit.*







## Fatigue Management Tools

The distribution team and contractors continue to seek potential ways to assist log truck drivers with identifying their fatigue level. This will allow measures to be put in place by an individual to improve their alertness and/or identify where system changes might be required to offer a safer working environment.

A special thanks goes out to all distribution contractors and in particular the drivers that are participating in the current trials. Having people prepared to participate allows progress for the whole group by determining if these tools are useful.

The AlertMeter trial is underway with 50 drivers and two MFM (NZ) distribution team members registered with logins to the mobile phone app. AlertMeter is a graphical cognitive alertness test lasting 60-90 seconds.



In June, participants in the trial familiarised themselves with the app and established their baselines. The app will measure their cognitive alertness compared to their normal baseline. As they improve at using the app, the baseline will continue to adjust, therefore always measuring their cognitive alertness to their "latest" baseline level. This trial will run for six months and data will be used to further understand the impact driver start time has on fatigue and how changing schedules can impact fatigue (alertness).

Charles Dawson, CEO of AutoSense, recently presented information to the MFM (NZ) distribution team and contractors on the new DDAW algorithm that is being trialled as an addition to the driver-facing camera in log trucks to identify driver drowsiness (before a fatigue event occurs). The system measures against the Karolinska Sleepiness Scale (KSS) and rates drivers' alertness between 1 (extremely alert) and 9 (extremely sleepy). A beam of light warns the driver when they are getting sleepy (8 or 9) and they can undertake measures to remedy the situation. One cartage contractor undertaking log cartage services for an MFM (NZ) client is trialling the system in some of their trucks. A special thanks to Self Loader Logging Limited for taking the initiative in trialling this system.

## Recognition of Good Health & Safety Practices

The distribution team continue to recognise drivers with MFM (NZ) Distribution Safety Awards for driving in our system every day for a full month with no fatigue or distraction events. We are also asking contractors and their staff to nominate others who they believe are worthy of recognition for a job well done in relation to good health and safety practices or reporting of health and safety incidents, hazards, or near misses.

Fast Logging 67 nominated Tevin Taylor (Gilmour Transport Limited Driver) to be acknowledged for his professionalism at their felling banners and the respect he shows with the banner system the crew has set up. Tevin also tidily rolled up the banner leaving it out of the mud, when it was no longer required to be in place.

**Thanks for a job well done, Tevin!**



Kajavala Forestry Limited loader operator, Robbie Belton, was rewarded for his great near miss reporting and professionalism in dealing with a situation in the yard with another contractor. Robbie shared his knowledge in a polite manner with this person, which was the best outcome for all in the situation.

**Nice work, Robbie!**



## 4Ds - What's Dumb, Difficult, Different or Dangerous

Francois Barton (Executive Director of the Business Leaders Health and Safety Forum) recently attended a PEAK Committee dinner and introduced the concept of 4Ds. Some distribution team members and distribution contractor reps are part of this committee and thought the concept was pretty good.

4Ds is a simple way to capture things that team members believe are dumb, difficult, different or dangerous about their job. This risk-based approach involves talking and listening to people by asking simply:

What doesn't make sense to you about the work we are doing or how we are doing it? **Dumb!**

What tasks do you find difficult or hard to do well? **Difficult!**

What has, or is, changing relative to how things are usually done or should be done? **Different!**

What feels risky to you about the work you do? **Dangerous!**

LINFOX is an example of a company that has introduced this concept and they believe it has strengthened team culture and created positive safety outcomes. Inviting honest conversations helps gain a deeper understanding about how the work is really done and how to make it better, easier and safer for everyone. Watch this video to hear more about their experience: <https://visualdomain.vudoo.io/watch/11181411822>

All the best for the third quarter of 2024.

**Noho ora mai**

## Export



A log being sawn at Aju Timber



Mike Soper, Rayonier Matariki Forests Production Manager, and Richard Feierabend, MFM (NZ) Harvesting Manager, measuring logs in the Aju Timber log yard

## Korean Market Visit To Look At Log Quality

By Lance MacLennan - Sales & Marketing Manager, Tauranga

*In the first week of July, Richard Feierabend, MFM (NZ) Harvesting Manager, joined an AVA Timber market visit to South Korea to investigate ongoing negative feedback on log quality from sawmill customers.*

Over the course of the week, numerous sawmill and customer sites were visited where log inspections took place. Those logs were then sawn so the group could understand the impact potential log defects have on the customers' lumber recovery.

With over 40% market share in South Korea, and a group of dedicated sawmill customers, MFM (NZ) and AVA Timber have a responsibility to respond to customers' concerns – treating them no differently than we would our domestic

New Zealand customers.

Over the coming weeks, the group will analyse the information gathered and meet with harvesting teams and contractors to ensure we are supplying a grade and log that meets both our and the customers' expectations.

**Updates on our progress and approach will also be provided in future editions of Manulife Forest Times.**



## Competition

### Winner of Best Article in the April 2024 Newsletter

By Helen Moffatt -  
Administrative Coordinator,  
Tauranga

*Congratulations to Jarron McInnes for his article on forestry fire protection. This is another important aspect of forestry management that doesn't always get the recognition it deserves.*

It is such a vital part of our business, so continually upskilling and delivering quality fire training to staff and contractors is crucial.



**Remember anybody is eligible to win and another \$50 gift voucher will be awarded to the person who contributes our favourite article from this edition. If you have a favourite, please email Helen:**  
[hmoффatt1@manulife.com](mailto:hmoффatt1@manulife.com)



# Forestry



Northland Forest Nursery (Kaikohe) seedling ready for lifting for Taumata Plantations Ltd Northern. Photo Greg Edmund MFM(NZ) Forester



Pods containing boxes, each holding 100 Arborgen grown radiata pine bare root trees ready to plant for Waionui Forest Investments Ltd. These have been placed under trees to help keep the trees cool. Photo MFM (NZ) Marie Heaphy, Health and Safety Coordinator

## Forestry Operational Highlights

By Peter Houston - Silviculture Manager

*As we approach the middle of the planting season, planting is on track for 3.6 million trees planted on 4500 hectares (11,120 acres) by the end of August.*

Our harvest schedule is used to plan for enough seed and mother-plants to grow seedlings and cuttings for the next five years annually. Our seedling and cutting orders for the 2024 planting were a year in advance (only 50% of the planned planting area is harvested).

Once harvest is complete, the area is handed over to forestry to prepare the area for planting. These activities may include wind-row tree offcuts (slash), spot rip and mound, and spraying vegetation (while considering withholding periods) prior to planting.

Meanwhile the seedlings and cuttings are grown on contract, inspected, "hardened" (topping, undercutting and root pruning), lifted into boxes, and transported in pods so they arrive in optimum condition for planting.

Lastly our workers replant the recently harvested stands, to start the next rotation, so that these trees are ready to harvest in about 27 years' time.



Ace of Spades planting in Matahina Forest (Waionui Forest Investments Limited): Photo MFM (NZ) Marie Heaphy, Health and Safety Coordinator



Ace of Spades planting at Matahina Forest. Photo: George Fanning-Ihaka, MFM (NZ) Forester



Daniel Barham (Forest Protection Services Trust) planting a Northland Forest Nursery seedling in Patutahi Forest (Taumata Plantations Limited Northern). Photo Greg Edmunds, MFM (NZ) Forester





(Left to right) Sharif Mangu, Luke Fever, and Nicki Robinson receive their thinning to waste certificates from Peter Houston (Silviculture Manager). Photo Greg Edmunds

## Northern/Eastern - Thinner Certification Continues

By Peter Houston - Silviculture Manager

*Although winter is generally the season when thinners swap their chainsaws for planting spades, in Northland and Eastern, thin to waste operations continue (albeit at a reduced level).*

Over the last quarter, thinner certificates have been issued to Willy Tangira and Paora Moka (Akaahia Coastal Contracting Limited), Luke Fever, Nathan Sullivan, Nicki Robinson and Sharif Mangu (Forest Protection Services Trust) with Joel and Tyson Neumann-Niha being re-certified.

The mechanical and motor manual thinning to waste programme is about 6900ha for Taumata Plantations, OTPP Forest Investments and Waonui Forest Investments. To maintain this programme of work, it is important to recognise thinner excellence.



On the day of the presentation, the thinners were undertaking prescribed burning operations in Hikurangi Forest (Taumata Plantations Limited Northern Area). This leaves a clean site for planting around landings.





# Forest Pest Control



## Kids Protecting The Forest

By Jarron McInnes - Protection Forester, Rotorua

*As Matariki weekend was observed throughout the country, the Nga Kaitiaki O Pokohu Hunting Club held its annual kids hunting competition in Tarawera Forest.*

A large number of youngsters braved the cool nights to observe Matariki and to hunt small game which included possums, wallabies, rabbits and hares. An impressive 364 pest animals, with a combined weight of 1056.14kg, were dispatched over the two-night shoot.

Before the competition started, tamariki helped plant native trees opposite the Kawerau Fire Depot to acknowledge Matariki, Putauaki and those who have passed before us.

Both MFM (NZ) and Tiaki Plantations Company provided sponsorship for prizes and made the compound facility available to the club for check in and prizegiving.

As Protection Forester for MFM (NZ), I was given the privilege of attending prizegiving on the Sunday, choosing winners for the Matariki colouring competition and being able to present prizes during the event. It's great seeing these enthusiastic young ones getting out in the bush with their parents and learning new skills that hopefully may see some finding careers in forestry.

**Nga Kaitiaki O Pokohu Hunting Club are very grateful for having received this support.**





## Harvest



Left to right: Darrell Tahere, Marcel Van Westbrook, Peter Auge and Jess Evans, Principle of Evans Logging Ltd

## Evans Logging Ltd Commences Harvesting In Tarawera Forest

By Andrew Widdowson - National Operations Manager, Tauranga

*The annual harvest in Tiaki Plantations Company Ltd forests is approximately 1.1 million tonnes per annum.*

Harvesting systems have for a number of years been ground-based, both stems and conventional log operations, with one to two swing yarders. As the harvest programme moves away from the Tarawera valley and into steeper country, there is a requirement for more hauler capacity.

Following an internal request for proposal process conducted earlier in the year, Evans Logging Ltd was selected as the third swing yarder crew to undertake mechanised clearfell harvesting in Tarawera Forest. A key selection decision was based on Evans Logging Ltd's strong health and safety culture including proactive risk management and near miss reporting.

Owner Jess Evans is well-known in the central North Island and to Manulife Forest Management (NZ), having partnered with Smiley Alexander of Fast Logging for a number of years to provide harvesting services to OTPP NZ.

The crew commenced in Tiaki on Monday 1 July in a setting on Cumming Road, Tarawera Forest. As the crew were new to the forest it was appropriate to arrange a pre-start karakia (blessing) which was conducted by Graham Te Rire, Māori Investments Ltd Director and kaumatua. Former Eastern Regional Manager, Les Russell, also attended. In addition to the karakia, Graham provided attendees with a very informative summary of the area and its people dating back several hundred years.

**The team at Manulife Forest Management (NZ) wish Jess and his crew every success over the coming years harvesting steep terrain in Tarawera Forest.**



Top: Evans swing yarder. Above Left to Right: Graham Te Rire, Māori Investments Ltd Director and kaumatua; Former Eastern Regional Manager Les Russell; Peter Auge, Harvesting Manager Tiaki and OTPP; and Henry Tibble Harvesting Forester

## OTPP NZ Directors' Field Trip

By Peter Auge - Harvesting Manager, Rotorua

*The OTPP NZ Forest Ltd and Waonui Forest Investments Ltd's operations field tour for Directors took place in Matahina and Pinnacles on 31 May 2024.*

The Matahina itinerary included a visit to the Tiaki fire store and stops at a re-establishment site, a thin for value site, and the Matai native forest reserve. The Pinnacles tour involved a visit to ground-based harvesting crew H&R75.

**All Directors and staff involved enjoyed the day.**



Visit to crew H&R75



Jarron McInnes explaining fire response capabilities





Shipping staff from AVA and TSB team inspect the mechanical processing head at Stephen 06 in Kinleith Forest



Rob Davey, the crew foreman from White 36, is demonstrating the Sensorview automatic barrier arms to Raphael Grzebieta and Tia Gaffney from Allied Forensics Group.

## Visitors to Harvesting Operations

By Darrell Tahere - National Harvesting Manager, Tokoroa

*We have had the pleasure of hosting many visitors since the last edition.*



New MFM (NZ) employees Sarah Fellingham and Alex de Rosemont, based in Tauranga, recently visited Knight 47 and Mokai Quarry in Kinleith Forest. It provided Sarah and Alex with a valuable opportunity to meet colleagues in person and gain a better understanding of the forest operations.



Working with Discover Forestry, we hosted Tauhara College from Taupo on a visit to G White Logging Ltd operation on State Highway 1. Students had the opportunity to see the machinery up close, interact with the operators, and observe both manual felling and mechanical log extraction from a safe distance.



The Stihl product development team recently visited Olsen 64's swing yarder operation in Kinleith Forest. In the photo is Sam Olsen with Brad Cathcart, Marvin Jentzsch, and Phil Needham. Brad and Phil are based in Auckland, while Marvin is located in Stuttgart, Germany.





Signage, security and fencing is in place to prevent unauthorised access during work hours.

## Cougar Park Harvesting

By Richard Feierabend - Harvesting Manager, Tokoroa Office

*Harvesting in Cougar Park has recommenced after a five year break. Cougar Mountain Bike Park is a hidden gem that borders the Tokoroa township on Taumata Plantations' land.*

It was established around 2001 after the Big Rock Park on Old Taupo Road was harvested and subsequently converted into farmland.

The park is managed by the Tokoroa Mountain Bike Club who do an amazing job of building and maintaining over 40kms of trails. The club runs many successful events throughout the year, bringing people from far and wide into the local community.

JDL Harvesting Crew 77 started salvage operations on 10 June. Engineering and construction are close behind, building landings, upgrading and mowing roads. Three cable crews (Knight Logging Crew 47, Olsen Cable Harvesting Crew 64 and Progressive Harvesting Crew 39), will be working closely together to get this harvested in the shortest possible timeframe.

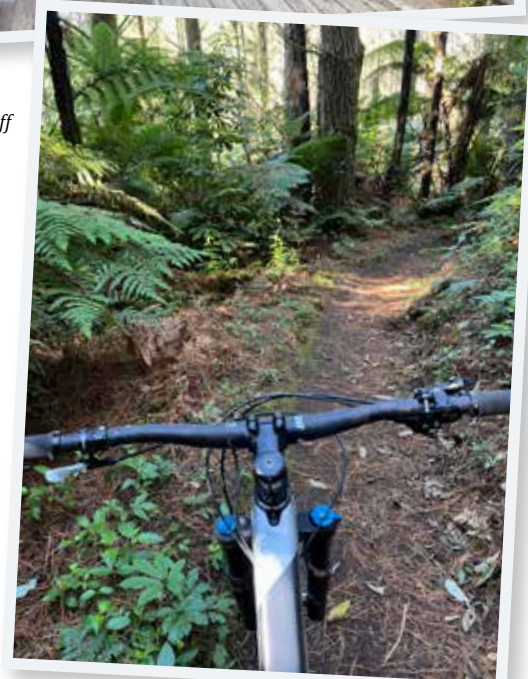
I blew the dust off my bike to go for one last ride in the "Big Bush" a couple of weeks ago and look forward to the new tracks that will be established by the club once harvesting operations have finished. Mid-December is the expected time for completion.

If you have never been to Cougar Park, I highly suggest you take the time to stop by.

The park is currently open after 4pm weekdays, and all day on public holidays and weekends.



Above: Tokoroa Sports Ground entrance is fenced off



Right: One last ride among the big trees



## Woodflow



Grant Schooley (MFM (NZ), Woodflow Scheduler) and Kim Rose (AVA Timber, Senior Export Manager - Sales and Marketing) on site at OTTP NZ's Crew 137

## Matching Log Products To Export Customer Demand

By Thornton Campbell - Woodflow Manager, Rotorua Office

*The New Zealand log export market to China has encountered several setbacks recently, primarily due to a downturn in the Chinese construction industry. In response, AVA Timber continues to shift its focus from wholesale resellers to directly supplying end users. This strategy involves understanding the specific production needs and standards of customers, like the approach used by MFM (NZ) for New Zealand's domestic supply.*

The key is matching the forest resource to customer needs with minimal operational impact.

To enhance understanding of log characteristics, there was a joint MFM (NZ) and AVA Timber field trip to the Tiaki Plantations' processing yard in Kawerau, OTTP NZ's Crew 137, and the Taumata Plantations' export yard in Kinleith, Tokoroa. Various log grades from numerous crew and forest sources were showcased.

The trip highlighted the operators' capability to cut logs to precise specifications and demonstrated MFM (NZ)'s ability to supply products to match customer demand. Moving forward, AVA Timber aims to push more specified products to end users, aiming to improve our stability and support our customers' individual demand in China.

Thanks to everyone involved including James McQuade, Grant Schooley, Chris Carter, Dacien Puller, Kim O'Leary, the KPY team, Crew 13 and the Pedersen's team.

## Health & Wellbeing

### Employee Assistance Programme (EAP)

By the Health and Safety Team

*You may be familiar with EAP, which is commonly known for their provision of counselling services. Manulife contractors, staff and their families have access to free counselling for various issues such as workplace support, relationship concerns, grief, loss, depression and anxiety.*

Aside from counselling services, EAP provides a variety of additional services that are available to support you and your family.



Download the new habithealth+ app today. The app works in tandem with professional support and features prompts and notifications to increase motivation. With the app you can:

- Manage your health on the move
- Book in with a wide range of EAP professionals
- Access support and advice
- Integrate your device to access insights about your wellbeing

To arrange FREE and confidential help and support at a convenient time:

download the app,

scan the QR code or

call EAP on 0800 327 669 or

go to their website [www.eapservices.co.nz](http://www.eapservices.co.nz)



## Engineering



Figure 1 Archer bulldozer forming a new road



Figure 2 Archer excavator laying Bidum cloth and metal on a formed road

## King Country Update

By Malcolm Worboys - Engineering Forester, Tokoroa

*Wow! Just like that another busy construction season has gone. Now we are on the countdown to those long summer days, dreaming of dry earth pushed out and trodden on by bulldozer cleats!*

The King Country area team have been very busy. Construction of forest infrastructure is well underway and now harvesting are out there making it look messy again! But in all honesty, it has been a great summer for earthworks. There has been some very well-built roads and skids in challenging terrain and soil types which keeps the focus and learning high for staff and contractors.

Engineering in first rotation forests brings with it a lot of challenges for planners and contractors. What looks like a great farm access track on the hillshade map generally turns out to be in the right place but far too steep. And when you do find the preferred road or skid location it often has spring water running through it! The beauty with forestry engineering is that it still allows for some 'fit for purpose' thinking which is sometimes needed to get the required outcome.

Archer Earthmoving Ltd have been busy in the Bennydale area in Raepahu and Ranginui Forest. Both forests have their own neighbour, environmental and soil issues that require a different approach as to what earthworks can be done. Metal cartage can get out to 70km and that is just to a stockpile to be reloaded onto a smaller truck. With ever increasing metal prices, it is by far the biggest cost to engineering.

Jilesen Group Ltd have focused their summer efforts in Hiwi and Waimiha forests where earthwork conditions are achievable. They are currently blessed with some light pumice soils in Te Uranga Forest over winter but it's not always that easy. Hiwi Forest with its heavy clays just up the road is a different kettle of fish and requires time to form new roads and let them settle before the logging trucks arrive.

Some King Country forests are tucked away in the foggy hills and serviced by narrow windy council roads that have seen little heavy traffic since the farmland was planted in the early 1990s. Taumata have been working alongside the Waitomo and Ruapehu district councils to ensure roads are fit for purpose well ahead of time before the harvesting machines arrive. This also means communicating directly with neighbouring landowners as it can be quite daunting for them to have "their" road now being used for logging trucks and getting them on board with what action is about to happen. Open and honest communication around what is expected is the best policy. Most are grateful that there is a local face from MFM (NZ) that they can call on and can see the positive impact that forestry has on the long-term improvements that are made to the roading network.

Using all the right tools in the right places ensures the best result in difficult conditions.

- Geotextiles such as Bidum cloth function as a separation layer between clay soils on the base and the metal layer on top. It provides good shear strength under load and water filtering capabilities.



Figure 3 Jilesen: Large skid cut and fill benches using pad foot roller for compaction



Figure 4 Jilesen: Completed fill benches





Figure 5 Jilsen: Sometimes the country is too steep to bench and end hauling of skid material is the only option



Figure 6 Hiwi forest. Tapuiwahine Road widening, RDC district



Figure 7 Hiwi forest: Curtis Road. New entrance onto Takiri Road, Waitomo district



Figure 8: Large rocks tightly packed around culvert inlet provide protection



Figure 9 Hydro seeding Hiwi Forest. Can't say we didn't do it!



Figure 10 Te Urunga Forest, Uepango Road, hillside is on the move



Figure 11 Retaining boulder wall neatly stacked along with drainage to prevent further movement



Figure 12 Hand drilling holes for rock blasting can be cheap, quick and effective

- Hydro seeding of exposed earth around high-risk sites such as waterways and fill batter slopes help prevent sediment loss and slow and filter water runoff (and feed the wildlife).
- Vibrating and static pad foot rollers help compact fill in layers, tightening soils and preventing future settling.
- New large >1.8m culvert crossings are becoming common place. Most streams are spring-fed and provide a constant flow. Ensuring culverts have the right form of inlet and outlet protection along with a designed low spot for over topping are important as the catchment run off changes during harvest.
- Retaining walls. Large boulders are often sought-after during road and skid construction and left aside for future use. They offer effective retaining of earthflows due to their large mass.

The King Country is known for its papa rock that can be hard to rip in the dry as it has no seams yet can become soft and slippery when wet. Sometimes it's just easier to blow it up rather than beat the excavator pick to bits.



Figure 13 After the blast. Bigger boulders can be used around culverts



## Bridges

Over the past six months maintenance has been conducted on 20 ageing bridges, some constructed 40 years ago mainly located in the King Country. They need to meet today's demanding trucking weights of 50max and more. Bridge It NZ have done an excellent job in providing a practical solution to

bridge maintenance with a hands-on can-do attitude. These old mostly NZFP bridges are well-built with clever abutment pole designs that have stood the test of time and generally only need some running board fasteners replaced and a new coat of paint.



Figure 14 Pittams Forest: Wagon Road 16m bridge ready for a tidy up



Figure 15 Wagon Road bridge - new cross members and a paint job restored it to a 50max weight limit.

## People

### Recognising Excellence

By Andrew Widdowson - National Operations Manager, Tauranga

*There are many moving parts to our forest supply chain. Delivering log products safely and efficiently to our customers requires dedication, skill and strong teamwork, every day.*

The following images are people who have been recognised in our business over the last few months for making that special effort.

Shaun Kapene and Clinton (CJ) Hohneck from Fast Logging Ltd (TPL Central) proudly display their Certificates of Excellence and voucher. These awards recognise their consistent high standards in mechanical log processing.



Blake Roigard from BR 03 receiving his Manual Tree Felling Certificate and shirt.



MFM (NZ) Harvesting Forester, Shiree Marshall, and MFM (NZ) Health and Safety Systems Manager, Rona Wheeldon, supporting the Wood is Good Programme at Amisfield School, Tokoroa.





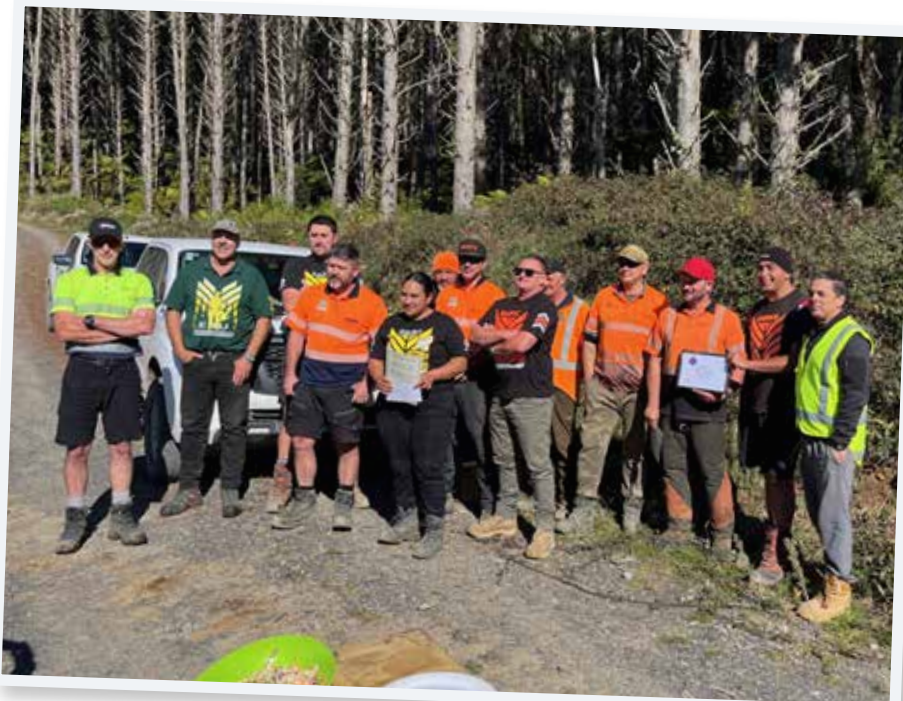


Dacian Pullen presented Safe Mate awards to Dan McPhee (left) and Terry Hubbard (right) from H&R75. They were engaged in machine-assisted manual tree felling near powerlines when they recognised a triple leader tree as a hazard and chose not to fell it. (North Power was informed and dispatched their own arborist to safely finish the job).



Two Safe Mates recently recognised

Left image: Wiremu Rua and Hoani Iopata (not pictured) from Skyline 95 for undertaking a risk assessment to move a backline machine. It required the contractor's input and they waited for his return. Right image: Luke McMurtrie for checking on the school bus after not hearing them call up in a while. The bus driver was on the wrong channel.



FAST Harvesting Crew 34 celebrated another milestone of 11 years LTI free.



Laura Solomon-Ahipu of Fast Logging Ltd (TPL Central) with her Certificate of Excellence and voucher for consistently maintaining high standards in mechanical log processing.

## People - New Staff



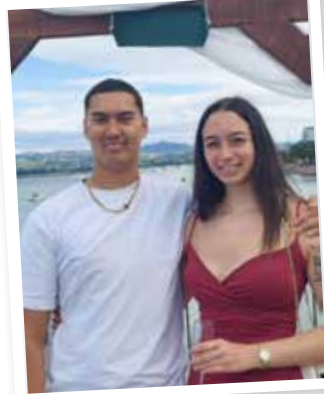
### Rebecca 'Becs' Charlie

Forester - Tokoroa Office

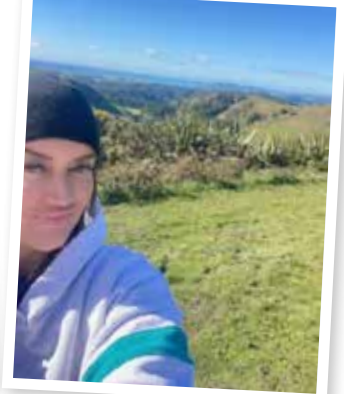
*Tena Koutou Katoa  
Ko Taupiri Toku Maunga  
Ko Kawhia Toku Moana  
Ko Tainui Toku Iwi  
Ko Ngāti Mahuta Toku Hapu  
Ko Maketu Toku Marae  
E Noho ana au ki Mangakino  
No Reira, Tena Koutou Katoa.*

Thank you for the warm welcome into MFM (NZ). I am excited to be a part of the forestry team in Tokoroa. I look forward to new learnings and challenges ahead of me from a different forestry perspective.

I have come from a cable harvesting background where I spent a good nine years with King Country Harvesting Ltd under the guidance of Will Marshall and the OFM Group. Through these



Legion 16, Anaïs, 21



Home with Kawhia Moana in the background

years as a logger, I have experienced a world that some will never get to see in a lifetime and this is where my passion for forestry and its people grew. Before this I was a hairdresser.

I am a wife and a mother of two. My husband, Strickland, is a KCH Processor Operator and our children, Anaïs and Legion, are now young adults with our son following our footsteps into forestry.

Out of work I enjoy sport, in particular rugby league and trainings. You will see me on the sideline supporting these days or in the gym training. I also try to get amongst nature and trail walk as much as I can as a form of resetting my wairua and mental wellbeing.

I'm not too familiar with an office space but I'm sure the forestry team culture is just as much the same amongst us all. Overall, I am excited to be here.

This quote sums me up: "The lessons you learn and the growth that you experience is never spontaneous; it's always meant to be. There's a higher purpose. A goal. A final destination that you have no idea of until you reach it. Keep climbing that mountain."

**Ngā mihi.**



Scuba diving in Bora Bora

### Alexandra de Rosemont

Finance Assistant - Tauranga Office

*I grew up in France and graduated with a master's degree in economics.*

I started my own business painting and upcycling furniture in the south of France before moving to Bora Bora, French Polynesia, where I worked as the head concierge at a 5-star resort.

Thirteen years ago, my husband, son and I relocated to New Zealand. I worked at Sonasafe where I held various roles including accounting, HR, office administration, buying and stock control.

My diverse experiences in multiple countries have given me the flexibility to adapt. In my spare time, I enjoy scuba diving, yoga, walking with friends and baking.

I am very excited about my new role in the finance team at Manulife!





## Sarah Fellingham

Accountant - Tauranga Office

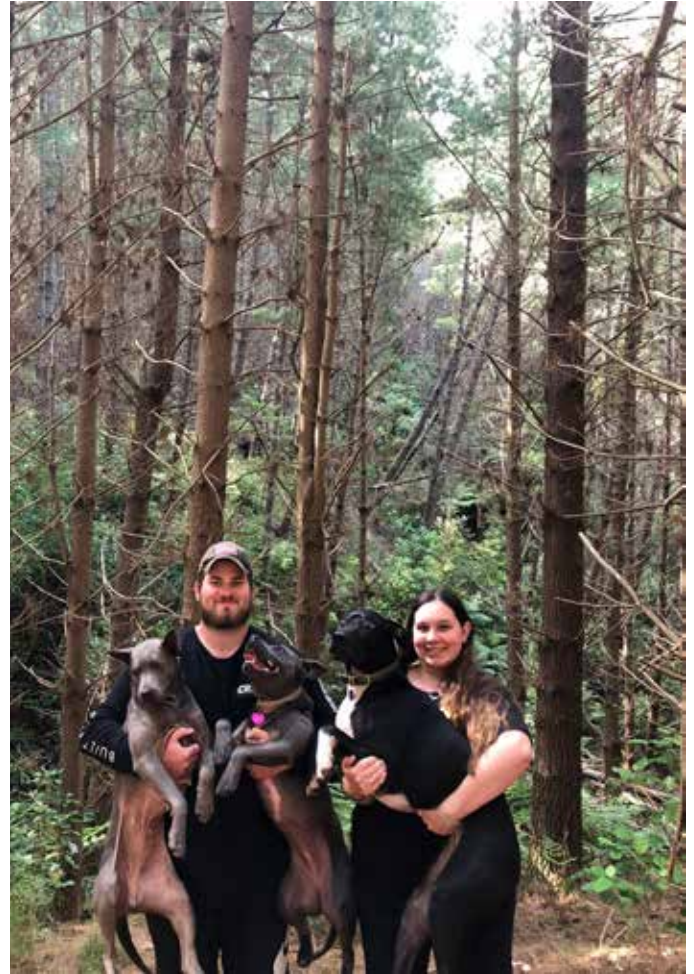
*Hello! I'm Sarah and I recently joined the finance team as an accountant.*

I have been an accountant for 20 years and have had experience in a variety of industries during my career but nothing quite like forestry. I am really looking forward to the challenge of learning about the various aspects of the business and the story behind the numbers.

I was born and raised in London and that is where I met my husband, Ryan, who is from New Zealand. We moved to New Zealand permanently in 2003 after a couple of years travelling between the two countries. Auckland was home first and then seven years ago we moved to Tauranga. We have one son, Archie, who is 11.

Outside of work our life pretty much revolves around taking our son to his sports and various activities. I try and get outside as much as possible and enjoy going for walks with our dog, Rosie, biking and beach life in the summer.

**Working for Manulife so far has been very interesting and I am so happy to be part of the team.**



## Cameron Fenton

Forester - Tokoroa Office

*Hi, my name is Cameron Fenton and I have just relocated from Herbertville to join the forestry team here in sunny Tokoroa.*

I am originally from Taupo where I was raised and lived the majority of my early life exploring the outdoors and spending time with friends.

After attending college in Taupo, I obtained a Diploma in Forest Management at Toi Ohomai in Rotorua. During term holidays I managed to gain valuable work experience at Hancock Forest Management in the Tokoroa foresters' team as a Student Forester.

For the past four years my partner and I lived in Herbertville, 60km east of Dannevirke, where we lived on 1000 hectares of freshly planted radiata with our dogs, cats, horses and goat. We have now relocated to Tokoroa, petting zoo in tow, and are enjoying our new home.

**I look forward to settling into the team here and getting to know all of the Manulife employees across New Zealand.**







My son Jack and I



White water sledging on the Kaituna River



Horse riding in Whakarewarewa Forest

## Marie Heaphy

Health, Safety & Wellbeing Coordinator - Rotorua Office

*I started life on Auckland's North Shore before moving to Waikato where I spent the rest of my formative years living on dairy farms.*

Following a three-year stint in Tauranga training to be a registered nurse, I left New Zealand. The next 10 years were spent living and working in Australia, UK and East Africa and travelling through Asia and Europe. Over this time, I worked as a nurse, a safari guide in Africa and at one stage, a painter decorator.

My wings were clipped after my son was born. I turned to study and spent the next few years completing a BSc and later an MSc in Earth Science and Environmental Planning.

I spent a decade at Scion, starting as a soil scientist, doing forest mensuration and erosion trials. Then I moved into GIS and finally ended up managing the UAV programme and working as a spatial analyst.

While at Scion, I started my health and safety career as a health and safety representative. I learnt how to investigate a range of forest and laboratory-related incidents, including several aviation incidents, as we came to grips with UAV software.

I joined Toi Ohomai (polytech) five years ago as a Health and Safety Advisor. Here I received a broad education looking after

many different programmes and trades including forestry, timber machining and the recently closed sawmill.

I live in Rotorua and I love an adventure. In my spare time I'm into cold water swimming, mountain biking and tramping. Triathlon is my sport and over the past few years I've entered several ironman events which really underpins the saying 'no pain, no gain'.

**It's great to be back working in forestry!**



Finishing Napier's Ironman in 2022



### Contact Us

Manulife Investment Management  
Forest Management (NZ) Limited  
PO Box 13404  
Unit B, 120 Hamilton Street, Tauranga 3141

Whangārei Office (09) 470 1300  
Tokoroa Office (07) 885 0350  
Rotorua Office (07) 350 0080  
Tauranga Office (07) 571 7900

**Manulife**  
Investment Management



## EAP Services

- Did you know that EAP Services provide support to help you navigate personal and professional challenges and enhance your wellbeing?
- EAP is a FREE and confidential service, available to all MFM (NZ) staff, contractors and their whānau.
- There are a range of services available, designed to support you and your family. These include counselling, financial, careers and legal advice.
- You can make an appointment by phoning 0800 327 669 or download the habithealth+ app which gives you access to the full range of services.



Introducing our new online booking portal for counselling services.

#### You can:

- Choose from an in-person or virtual appointment
- Search by first available appointment or your preferred location
- Choose a specific clinician to work with
- Confirm the booking and receive a confirmation email
- Easily reschedule or cancel an appointment if plans change

#### Book now!

Scan the QR code >

Or you can still call us on

**0800 327 669**



Get the help you need with EAP Services

## Health & Safety Wellness Leader

MFM (NZ) is delighted to announce the appointment of Richard Stringfellow as our new Health & Safety Wellness Leader for our managed estates. Many of you may already be familiar with Richard from his previous role at SafeTree NZ as a Toroawhi.

With over 33 years of experience in the forestry sector, Richard brings a wealth of knowledge and expertise to his new role. He will play a key role supporting the work of the Peak Mental Health and Wellbeing Sub-committee, continuing his work in the wellbeing space.

In addition to his professional endeavours, Richard has also established Fit4Work, a business dedicated to promoting the health and wellbeing of forestry workers to ensure a safe working environment. He is committed to maintaining an open-door policy for anyone in need of personal or professional support.



Richard Stringfellow has established his own business Fit4Work that will be contracting to MFM (NZ)

Outside of work, Richard is passionate about mountain biking and leads the Fit4Riding group, organising relaxed and enjoyable rides in Tokoroa, Rotorua and Taupō for riders of all levels with different types of bikes.

Richard will be visiting all our offices and operations to share the MFM (NZ) mental health and wellbeing strategy, and to help improve the literacy of our workforce in mental health and wellbeing.

**Richard can be reached directly on his mobile at 027 777 0894. He is more than happy to attend tailgate or safety meetings.**